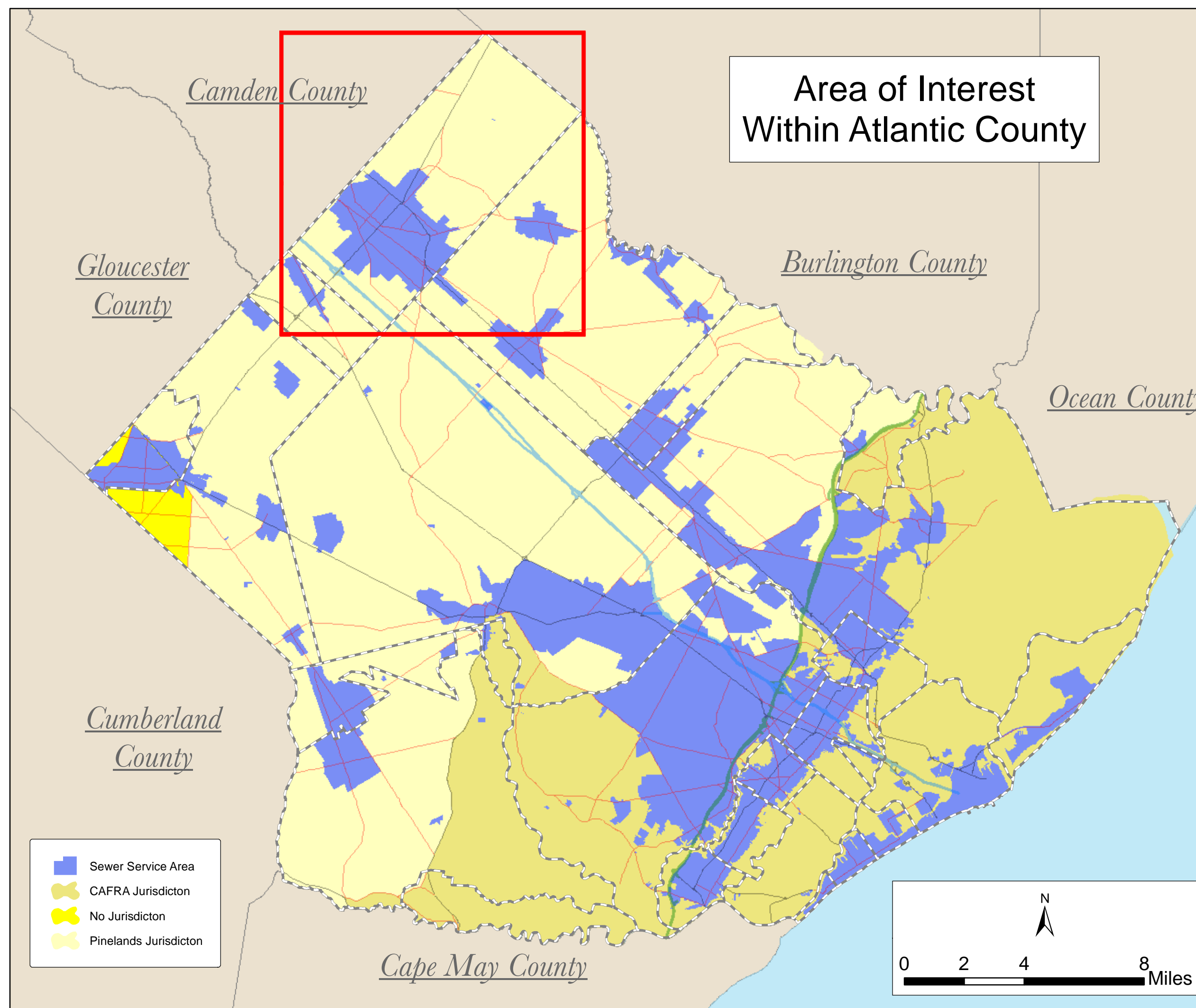
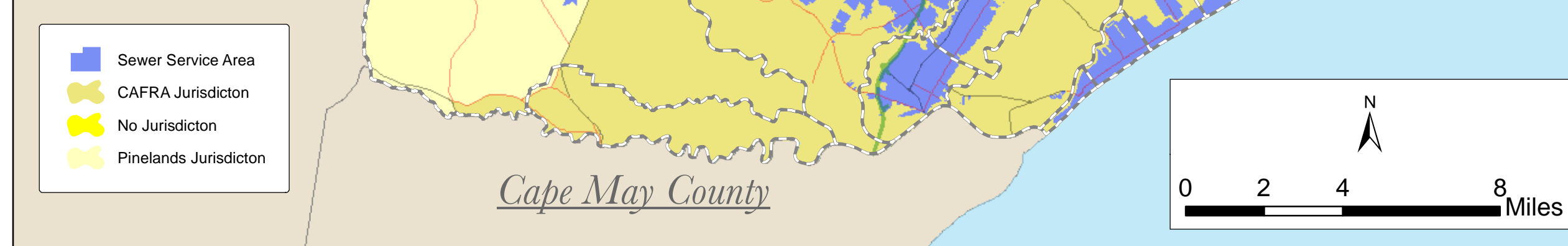




Hammonton Future Wastewater Service Area Adopted November 6, 2013



Facility Name	NJPDES
Alpine Village Mobile Home Court	NJ00107924
L's Restaurant	NJ00167797
Somerset Cove Marina LLC	NJ00100699
Greenview Golf Course	NJ00109220
Marlin Apartments	NJ00146887
Estel Manor - Atlantic County Park	NJ00128495
The Fete Restaurant	NJ00128627
Oceanville Station	NJ00167251
Galloway National Golf Club Plant	NJ00106886
Chestnut Lake Campground	NJ00105348
Holiday Haven Campground LLC	NJ00089731
Lazy River Cade Campground	NJ00099988
Yogi Berra's Allstate Park	NJ00080690
Pleasant Valley Campground	NJ00089103
Dates of Newmouth Plant	NJ0009982
Alpine Village Mobile Home Court	NJ00107824
Richard Glass Co.	NJ00054474
Winding River Campground	NJ00095367
Pilgrim Academy	NJ00134732
Pilgrim Academy	NJ00134732
Holly Acres Best Holiday Trm-L-Park	NJ00095707
Mullica Woods Mobile Home Park	NJ00112640
Buena Family Manor	NJ00094948
Indian Branch Park Campground	NJ0102717
Scholar, Inc.	NJ00030441
Petrum Nursery	NJ00189763
Liberty Square Enterprises LLC	NJ00154697
Paradise Lakes Campground	NJ00090687
Spiritiva Professional Center	NJ00107978
Boy Breeze Village Mobile Home Park	NJ00084417
Colonial Meadows Family Campground	NJ0009120
Egg Harbor River Resort	NJ00094779
Outforest Mobile Home Park LLC	NJ00084338
Blackberry Hill Campground	NJ00080695
OAE Camera, Inc.	NJ00051071
Country Oaks	NJ00080251
Waymouth Twp. Elementary School plant	NJ00101633
Elwood School	NJ00088340
Estel Manor Elementary School	NJ00104331
Folsom Elementary School	NJ00102692
Mornings at Swette also	NJ0067032
Red Wing Lakes Campground	NJ00139738
South Jersey Gas Company	NJ00105651
St. Augustine Preparatory School	NJ0132842
Switzerland Gastro	NJ00080314
Viva Firenze Ristorante	NJ00102554
Wilmed Glass Co	NJ0074004



"Locations of future pump stations, major interceptors, and trunk sewers are being provided for general information only and will not serve as the basis for any future consistency determinations or permit reviews unless the pump station, major interceptor or trunk sewer is part of a State or Federally funded project."

"Pursuant to N.J.A.C. 7:15, Riparian zones are 300 feet from top of bank (or centerline of a first order stream where no bank is apparent) for waters designated as Category One and all upstream tributaries within the same HUC 14. 150 feet for waters designated Trout Production and all upstream waters; 150 feet for water designated Trout Maintenance and all upstream waters within one linear mile upstream of the length of the regulated water; 150 feet for any segments of water flowing through an area that contains documented habitat for a threatened or endangered species of plant or animal, which is critically dependent on the surface water body for survival; and all upstream waters (including tributaries) within one linear mile as measured along the length of the surface water body, 150 feet for waters that run through acid-producing soils; and, 50 feet for all waters not designated C1, trout waters, critically water dependent Threatened and Endangered Species Habitat, or associated with acid soils.

"Surface waters that are designated Category One are listed in the Surface Water Quality Standards at N.J.A.C. 7:9B. The Department's 'Surface Water Quality Standards' GIS data layer was utilized to determine these waters. The applicable 300 foot buffer has been applied to these waters and removed from the proposed sewer service areas on the mapping. Linear with buffers have not been graphically removed from the sewer service area but are not proposed for sewer service. (Courtesies may map out the linear with buffers also but the 300' buffers are the minimum, the lesser buffers are removed during the buildout analysis.) Jurisdictional determinations by the Department will be utilized to determine the extent of the sewer service area on individual lots.

"Furthermore, compliance with the riparian zone standard has been demonstrated by the adoption of municipal Riparian Corridor Ordinances, which have been updated to be in compliance with the Flood Hazard Control Act Rules (N.J.A.C. 7:13) and Water Quality Management Rules (N.J.A.C. 7:15). See municipal chapters for additional information."

"All existing, new, or expanded industrial pretreatment facilities requiring Significant Indirect User (SIU) permits and/or Treatment Works Approvals, and which are located within the specified sewer service area, are deemed to be consistent."

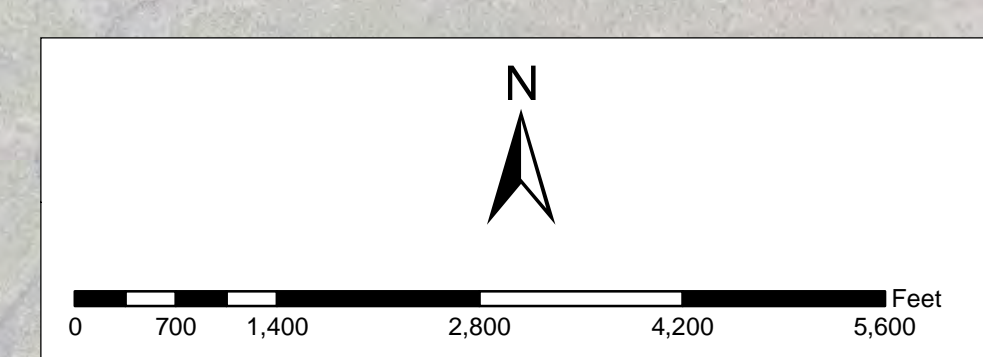
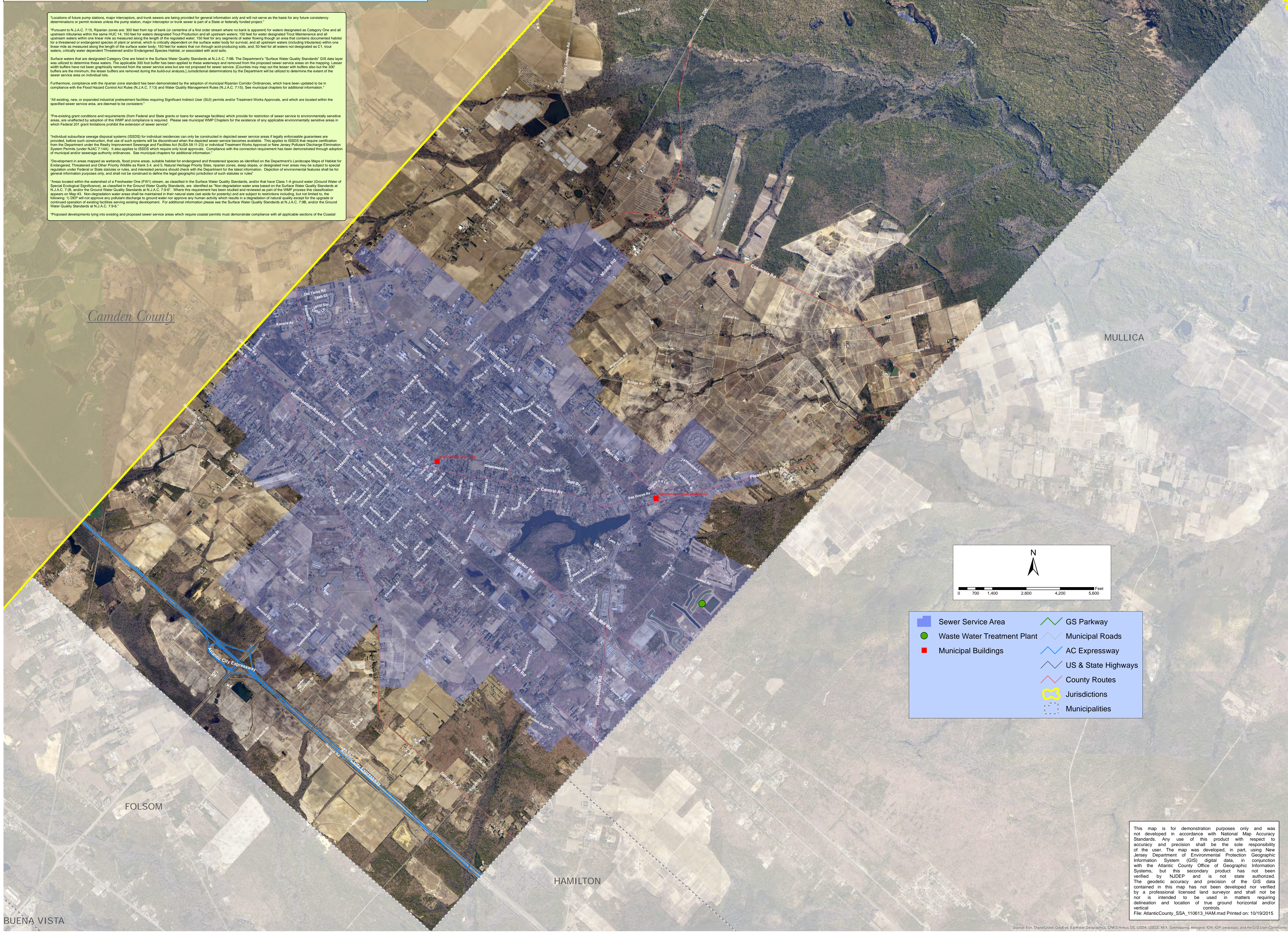
"The existing grant conditions and requirements (from Federal and State grants or loans for sewerage facilities) which provide for restriction of sewer service to environmentally sensitive areas, are unaffected by adoption of this WMP and compliance is required. Please see municipal WMP Chapters for the description of any applicable environmentally sensitive areas in which Federal 201 grant limitations prohibit the extension of sewer service."

"Individual subsurface sewage disposal systems (ISSDS) for individual residences can only be constructed in depicted sewer service areas; if legally enforceable guarantees are provided before such construction, that use of such systems will be discontinued when the depicted sewer service becomes available. This applies to ISSDS that require certification from the Department under the Ready Treatment Sewerage and Facilities Act (NJSA 58:11-23) or individual Treatment Works Approval or New Jersey Pollutant Discharge Elimination System Permits (under NJAC 7:14a). It also applies to ISSDS which require only local approval. Compliance with the connection requirement has been demonstrated through adoption of municipal and/or sewerage authority ordinances. See municipal chapters for additional information."

"Development in areas mapped as wetlands, flood prone areas, suitable habitat for endangered and threatened species as identified on the Department's Landscape Maps of Habitat for Endangered, Threatened and Other Priority Wildlife as Rank 1, 4, and 5, Natural Heritage Priority Sites, riparian zones, steep slopes, or designated river areas may be subject to special regulation under Federal or State statutes or rules, and interested persons should check with the Department for the latest information. Decision of environmental features shall be for general information purposes only, and shall not be construed to affirm the legal jurisdictional determination of such features or rules."

"Areas located within the watershed of a Freshwater One (FWO) stream, as classified in the Surface Water Quality Standards, and/or that have Class 1-A ground water (Ground Water of Special Ecological Significance), as classified in the Ground Water Quality Standards, are identified as "Non-degradation water areas based on the Surface Water Quality Standards at N.J.A.C. 7:9B, and/or the Ground Water Quality Standards at N.J.A.C. 7:9A." Where this requirement has been divided and reviewed as part of the WMP process, this classification appears on Map #2. Non-degradation water areas shall be maintained in their natural state (in order to protect) and are subject to restrictions including, but not limited to, the following: 1) DEP will not approve any pollutant discharge to ground water nor approve any human activity which results in degradation of natural quality except for the upgrade or continued operation of existing facilities serving existing development. For additional information please see the Surface Water Quality Standards at N.J.A.C. 7:9B, and/or the Ground Water Quality Standards at N.J.A.C. 7:9A."

"Proposed developments tying into existing and proposed sewer service areas which require coastal permits must demonstrate compliance with all applicable sections of the Coastal



- Sewer Service Area
- Waste Water Treatment Plant
- Municipal Buildings
- GS Parkway
- Municipal Roads
- AC Expressway
- US & State Highways
- County Routes
- Jurisdictions
- Municipalities

This map is for demonstration purposes only and was not developed in accordance with National Map Accuracy Standards. Any use of this product with respect to accuracy and precision shall be the sole responsibility of the user. The map was developed, in part, using New Jersey Department of Environmental Protection Geographic Information System (GIS) digital data, in conjunction with the Atlantic County Office of Geographic Information Systems, but this secondary product has not been verified by NJDEP and is not state authorized. The geodetic accuracy and precision of the GIS data contained in this map has not been developed nor verified by a professional licensed land surveyor and shall not be intended to be used in matters requiring delineation and location of true ground horizontal and/or vertical controls. File: AtlanticCounty_SSA_110613_HAM.mxd Printed on: 10/18/2015