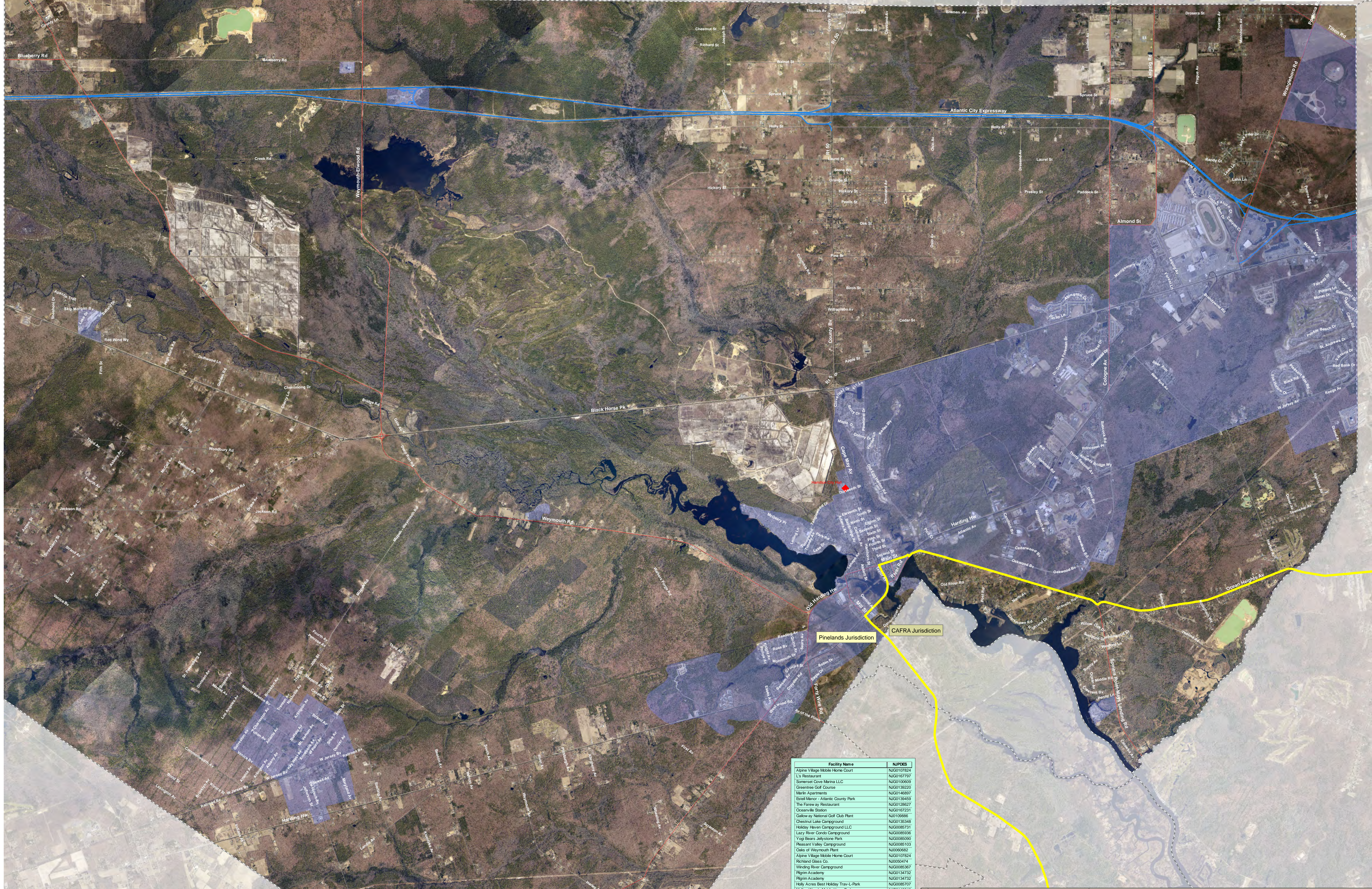
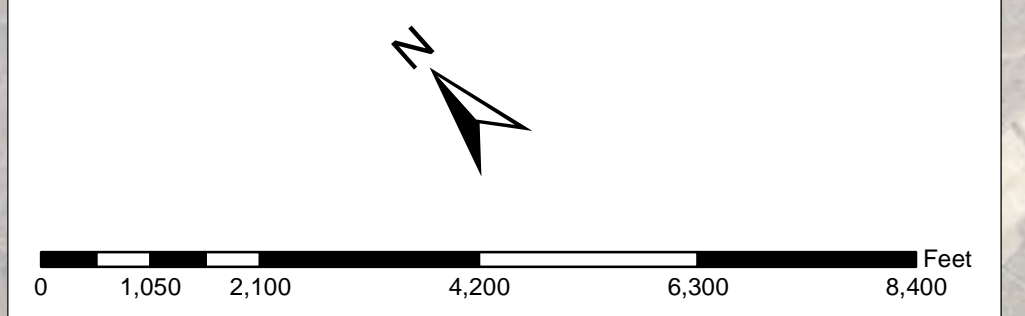


Hamilton Future Wastewater Service Area Adopted November 6, 2013



Facility Name	NUPRES
Alpine Village Mobile Home Court	NJ0107824
L's Restaurant	NJ0107797
Somerset Cove Marina LLC	NJ0106960
Greenlee Golf Course	NJ0118220
Marin Apartments	NJ0116977
Estel Manor - Atlantic County Park	NJ0116459
The Fenway Restaurant	NJ0112627
Chester Station	NJ0112121
Gallop by National Golf Club Rent	NJ0108886
Chester Lake Campground	NJ0112349
Holiday River Campground LLC	NJ0006731
Lazy River Condo Campground	NJ0006930
Top Notch Jellyville Park	NJ0006597
Pleasant Valley Campground	NJ0006103
Oaks of Weymouth Plant	NJ0006062
Alpine Village Mobile Home Court	NJ0107824
Richard Glass Co.	NJ0004474
Winding River Campground	NJ0003837
Ripm Academy	NJ0114732
Ripm Academy	NJ0114732
Holly Acres Best Holiday Trav L.Park	NJ0006707
Mulica Woods Mobile Home Park	NJ0112640
Burns Family Manor	NJ0004948
Indian Branch Park Campground	NJ0102717
Schuler, Inc.	NJ0003441
Platinum Playground	NJ0116765
Liberty Square Emporium LLC	NJ0116977
Pinelands Lakes Campground	NJ0006667
Smithville Professional Center	NJ0079279
Bay Breeze Village Mobile Home Park	NJ0004473
Colonial Meadows Family Campground	NJ0006120
Egg Harbor River Resort	NJ0004370
Colonial Mobile Home Park LLC	NJ0004338
Blueberry Hill Campground	NJ0008366
C&E Carriers Inc.	NJ0010711
Country Dais	NJ0002511
Weymouth Twp. Elementary School plant	NJ0104333
Blwood School	NJ0006380
Estel Manor Elementary School	NJ0104331
Folsom Elementary School	NJ0102882
Mornings at Sevens Pier	NJ0078122
Red Wing Lakes Campground	NJ0118738
South Jersey Gas Company	NJ0106661
St. Augustine Preparatory School	NJ0118242
Swiweater Casino	NJ0000314
Vila Filomena Restaurant	NJ0118254
Wineat Glass Co.	NJ0074004



- Sewer Service Area
- Municipal Buildings
- GS Parkway
- Municipal Roads
- AC Expressway
- US & State Highways
- County Routes
- Jurisdictions
- Municipalities

This map is for demonstration purposes only and was not developed in accordance with National Map Accuracy Standards. Any use of this product with respect to accuracy and precision shall be the sole responsibility of the user. The map was developed, in part, using New Jersey Department of Environmental Protection Geographic Information System (GIS) digital data, in conjunction with the Atlantic County Office of Geographic Information Systems, but this secondary product has not been verified by NJDEP and is not state authorized. The geographic accuracy and precision of the GIS data contained in this map has not been developed nor verified by a professional licensed land surveyor and shall not be used in matters requiring delineation and location of true ground horizontal and/or vertical controls.

File: AtlanticCounty_SSA_110610_HAL.mxd Printed on: 10/19/2015

Locations of future pump stations, major interceptors, and trunk sewers are being provided for general information only and will not serve as the basis for any future consistency determinations or permit reviews unless the pump station, major interceptor or trunk sewer is part of a State or federally funded project.

*Pursuant to N.J.A.C. 7-15, Riparian zones are 300 feet from top of bank (or centerline of a first order stream where no bank is apparent) for waters designated as Category One and all upstream tributaries within the same N.J.A.C. 7-15, 100 feet for waters designated Trout Production and all upstream waters; 100 feet for water designated Trout Maintenance and all upstream waters within one linear mile as measured along the length of the regulated water; 100 feet for any segments of water flowing through an area that contains documented habitat for a threatened or endangered species of plant or animal, which is critically dependent on the surface water body for survival, and all upstream waters (including tributaries) within one linear mile as measured along the length of the surface water body; 100 feet for waters that run through agricultural soils, and; 50 feet for all waters not designated as C1, trout waters, critically water dependent Threatened and/or Endangered Species Habitat, or associated with acid soils.

Surface waters that are designated Category One are listed in the Surface Water Quality Standards at N.J.A.C. 7-9B. The Department's "Surface Water Quality Standards" GIS data layer was utilized to determine these waters. The applicable 300 foot buffer has been applied to these waters and removed from the proposed sewer service area on the mapping. Lesser width buffers have not been gradually removed from the sewer service area but are not proposed for sewer service. Counties may map out the lesser width buffers also but the 300 foot buffers are the minimum. The lesser buffers are removed during the built-out analysis. Jurisdictional determinations by the Department will be utilized to determine the extent of the sewer service area on individual lots.

Furthermore, compliance with the riparian zone standard has been demonstrated by the adoption of municipal Riparian Corridor Ordinances, which have been updated to be in compliance with the Flood Hazard Control Act Rules (N.J.A.C. 7-13) and Water Quality Management Rules (N.J.A.C. 7-15). See municipal chapters for additional information.

*All existing, new, or expanded industrial pretreatment facilities requiring Significant Indirect User (SIU) permits and/or Treatment Works Approvals, and which are located within the specified sewer service area, are deemed to be consistent.

*Pre-existing grant conditions and requirements (from Federal and State grants or loans for sewerage facilities) which provide for restriction of sewer service to environmentally sensitive areas, are unaffected by adoption of the WMP and compliance is required. Please see municipal WMP Chapters for the existence of any applicable environmentally sensitive areas in which Federal 201 grant limitations prohibit the extension of sewer service.

*Individual subsurface sewerage disposal systems (SSDS) for individual residences can only be constructed in designated sewer service areas if legally enforceable guarantees are provided, before such construction, that use of such systems will be discontinued when the designated sewer service becomes available. This applies to SSDS that require certification from the Department under the Publicly Implemented Sewerage and Facilities Act (NJSA 16:27) or individual Treatment Approvals or New Jersey Pollutant Discharge Elimination System Permits (under NJAC 7:14A). It also applies to SSDS which require only local approvals. Compliance with the connection requirement has been demonstrated through adoption of municipal and/or sewerage authority ordinances. See municipal chapters for additional information.

*Development in areas mapped as wetlands, flood prone areas, suitable habitat for endangered and threatened species as identified on the Department's Landscape Maps of Habitat for Endangered, Threatened and Other Priority Wildlife as Rank 3, 4, and 5, Natural Heritage Priority Sites, riparian zones, steep slopes, or designated river areas may be subject to special regulation under Federal or State statutes or rules, and interested persons should check with the Department for the latest information. Deposition of environmentally sensitive areas for general information purposes only, and shall not be construed to define the legal geographic jurisdiction of such statutes or rules.

*Areas located within the watershed of a Freshwater One (FW1) stream, as classified in the Surface Water Quality Standards, and/or that have Class 1-A ground water (Ground Water of Special Ecological Significance), as classified in the Ground Water Quality Standards, are identified as "Non-degradation" waters based on the Surface Water Quality Standards at N.J.A.C. 7-9B, and/or the Ground Water Quality Standards at N.J.A.C. 7-9B. Where this requirement has been studied and reviewed as part of the WMP process this classification appears on Map 10. Non-degradation water areas shall be maintained in their natural state but shall be protected and shall not be degraded or otherwise altered, and shall not be used for any activity that results in a degradation of natural quality except for the upgrade or continued operation of existing facilities serving existing development. For additional information please see the Surface Water Quality Standards at N.J.A.C. 7-9B, and/or the Ground Water Quality Standards at N.J.A.C. 7-9B.

*Proposed developments tying into existing and proposed sewer service areas which require coastal permits must demonstrate compliance with all applicable sections of the Coastal

