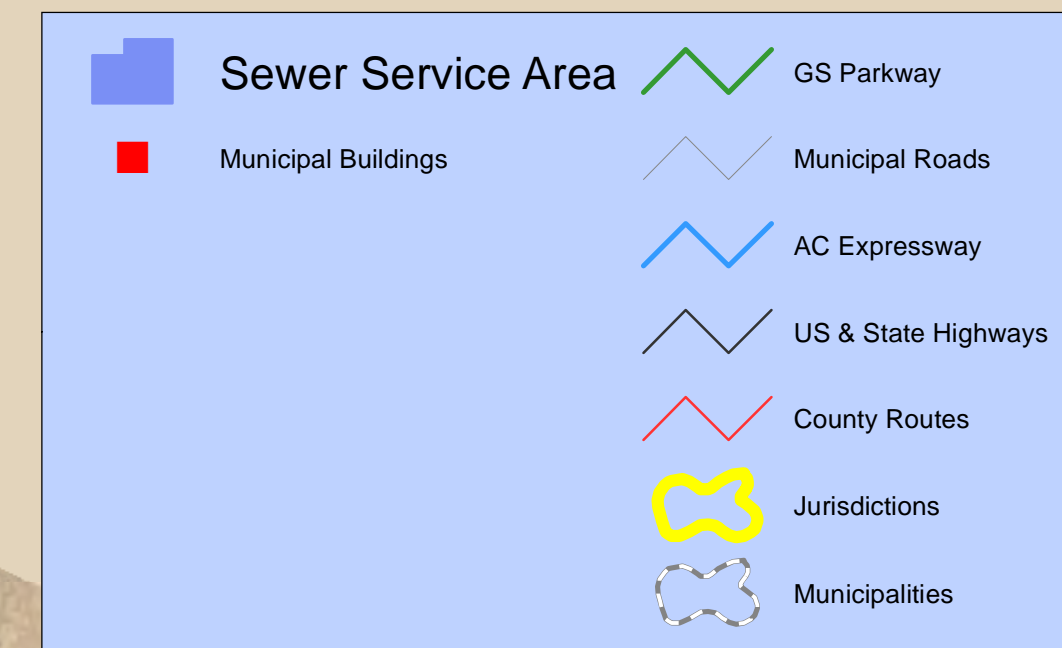
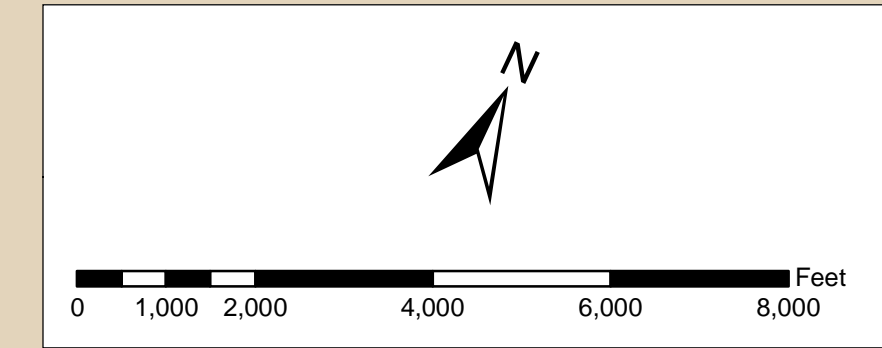




Galloway Future Wastewater Service Area Adopted November 6, 2013

Burlington County



Ocean County

Locations of future pump stations, major interceptors, and trunk sewers are being provided for general information only and will not serve as the basis for any future consistency determinations or permit reviews unless the pump station, major interceptor or trunk sewer is part of a State or federally funded project.

*Pursuant to N.J.A.C. 7-15, Riparian zones are 300 feet from top of bank (or centerline of a first order stream when no bank is apparent) for waters designated as Category One and all upstream tributaries within the same N.J.A.C. 7-15, 150 feet for waters designated Trout Production and all upstream waters, 150 feet for water designated Trout Maintenance and all upstream waters within one linear mile as measured along the length of the regulated water, 150 feet for any segments of water flowing through an area that contains documented habitat for a threatened or endangered species or part of an area, which is critically dependent on the surface water body for survival, and all upstream waters (including tributaries) within one linear mile as measured along the length of the surface water body, 150 feet for waters that run through agricultural lands, and 50 feet for all waters not designated as C1, trout waters, critically water dependent Threatened and/or Endangered Species Habitat, or associated with acid soils.

Surface waters that are designated Category One are listed in the Surface Water Quality Standards at N.J.A.C. 7:28. The Department's "Surface Water Quality Standards" GIS data layer was utilized to determine these waters. The applicable 300 foot buffer has been applied to these waters and removed from the proposed sewer service areas on the mapping. Lessor with buffers have not been graphically removed from the sewer service area but are not proposed for sewer service. Counties may raise up the issue with buffers also but the 300' buffers are the minimum, the lesser buffers are removed during the built-out analysis. Jurisdictional determinations by the Department will be utilized to determine the extent of the sewer service area on individual lots.

Furthermore, compliance with the riparian zone standard has been demonstrated by the adoption of municipal Riparian Corridor Ordinances, which have been updated to be in compliance with the Flood Hazard Control Act Rules (N.J.A.C. 7:13) and Water Quality Management Rules (N.J.A.C. 7:15). See municipal chapters for additional information.

*All existing, new, or expanded industrial pretreatment facilities requiring Significant Industrial User (SIU) permits and/or Treatment Works Approvals, and which are located within the specified sewer service area, are deemed to be consistent.

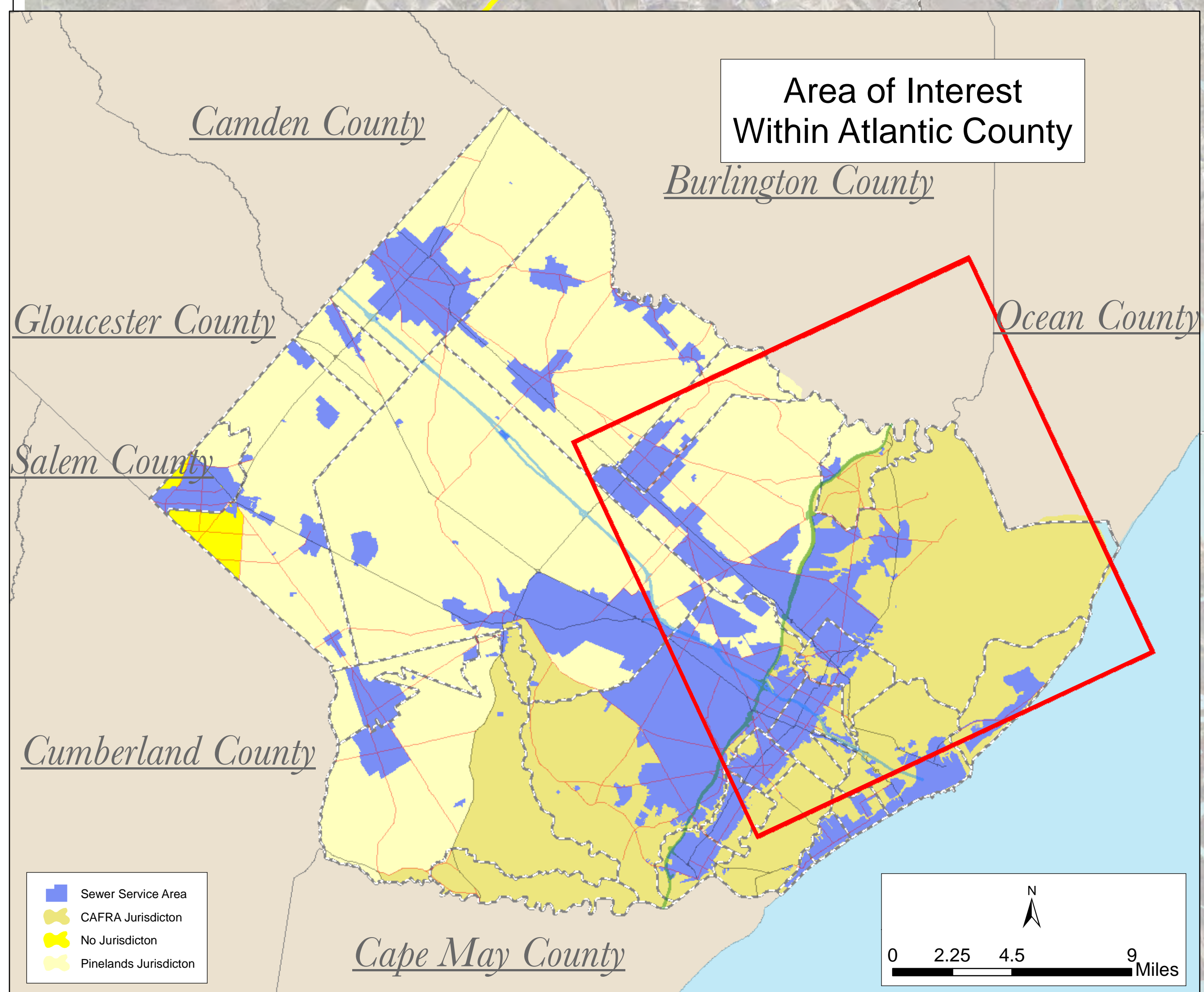
*Pre-existing grant conditions and requirements from Federal and State grants or loans for sewerage facilities which provide for restriction of sewer service to environmentally sensitive areas, are unaffected by adoption of this WMP and compliance is required. Please see municipal WMP Chapters for the existence of any applicable environmentally sensitive areas in which Federal 201 grant limitations prohibit the extension of sewer service.

*Individual subsurface sewage disposal systems (SSEDS) for individual residences can only be constructed in designated sewer service areas if legally enforceable guarantees are provided, before such construction, that use of such systems will be discontinued when the designated sewer service becomes available. This applies to SSEDS that require certification from the Department under the Publicly Owned Sewerage and Facilities Act (NJSA 58:15-23) or individual Treatment Works Approval or New Jersey Pollution Discharge Elimination System Permits under NJAC 7:14-A. It also applies to SSEDS which require only local approvals. Compliance with the certification requirement has been demonstrated through adoption of municipal and/or sewerage authority ordinances. See municipal chapters for additional information.

*Development in areas required as wetlands, flood prone areas, suitable habitat for endangered and threatened species as identified on the Department's Landscape Map of Habitat for Endangered, Threatened and Other Priority Wildlife as Rank 3, 4, and 5, Natural Heritage Priority Sites, riparian zones, steep slopes, or designated river areas may be subject to special regulation under Federal or State statutes or rules, and interested persons should check with the Department for the latest information. Deposition of environmental features vital for general information purposes only, and shall not be construed to define the legal geographic jurisdiction of such statutes or rules.

*Areas located within the watershed of a Freshwater One (FWO) stream, as classified in the Surface Water Quality Standards, and/or that have Class 1 A ground water (Ground Water of Special Ecological Significance), as classified in the Ground Water Quality Standards, are identified as "Non-degradation" water area based on the Surface Water Quality Standards at N.J.A.C. 7:28, and/or the Ground Water Quality Standards at N.J.A.C. 7:26. Where this requirement has been studied and reviewed as part of the WMP process this classification appears on Map 10. Non-degradation water areas shall be maintained in their existing state (not made for protection) and are subject to restrictions including, but not limited to the following: 1) DEP will not approve any pollutant discharge to ground water that results in a degradation of natural quality except for the upgrade or continued operation of existing facilities serving existing development. For additional information please see the Surface Water Quality Standards at N.J.A.C. 7:28, and/or the Ground Water Quality Standards at N.J.A.C. 7:26.

*Proposed developments tying into existing and proposed sewer service areas which require coastal permits must demonstrate compliance with all applicable sections of the Coastal



Facility Name	NJDEP ID
Alpine Village Mobile Home Court	NJ00107024
L's Restaurant	NJ00167797
Somerset Cove Marina LLC	NJ00100609
Coastline Golf Course	NJ00180230
Marlin Apartments	NJ00146897
East Manor - Atlantic County Park	NJ00139499
The Brewery Restaurant	NJ00184827
Oceanville Station	NJ00167231
Galloway National Golf Club Plant	NJ00108886
Chesford Lake Campground	NJ00150346
Holiday Haven Campground LLC	NJ00086731
Lady River Condo Campground	NJ00089336
Trapp Beach Adventure Park	NJ00065930
Pleasant Valley Campground	NJ00081103
Clubs of Weymouth Point	NJ00066862
Alpine Village Mobile Home Court	NJ00107024
Richard Glass Co.	NJ00047474
Wilding River Campground	NJ00086897
Pilgrim Academy	NJ00134732
Pilgrim Academy	NJ00134732
Holly Acres Best Holiday Inn-L Park	NJ00065927
Melissa Woods Mobile Home Park	NJ00112640
Buena Family Manor	NJ00044948
Indian Branch Park Campground	NJ00107717
Scholar, Inc.	NJ0032441
Platinum Playground	NJ00169765
Liberty Square Businesses LLC	NJ00184937
Paradise Lakes Campground	NJ00060667
Greenhill Professional Center	NJ00178079
Bay Breeze Village Mobile Home Park	NJ00044117
Colonial Meadows Family Campground	NJ00089120
Egg Harbor River Resort	NJ00043199
Oakcrest Mobile Home Park LLC	NJ00043436
Blueberry Hill Campground	NJ00066366
C&E Services Inc	NJ0010111
Country Oaks	NJ00085251
Weymouth Twp. Elementary School plant	NJ0010433
The Owl School	NJ00083460
East Manor Elementary School	NJ00106431
Falloon Elementary School	NJ00162892
Mooring at Seaside Pier	NJ00170742
Red Wing Lakes Campground	NJ00138738
South Jersey Golf Company	NJ00156617
St. Augustine Preparatory School	NJ00102842
Sovereign Casino	NJ00000314
Ugly Horrors Restaurant	NJ00166256
Wildard Glass Co.	NJ00142024

This map is for demonstration purposes only and was not developed in accordance with National Map Accuracy Standards. Any use of this product with respect to accuracy and precision shall be the sole responsibility of the user. The map was developed, in part, using New Jersey Department of Environmental Protection Geographic Information System (GIS) digital data, in conjunction with the Atlantic County Office of Geographic Information Systems, but this secondary product has not been verified by NJDEP and is not state authorized. The geodetic accuracy and precision of the GIS data contained in this map has not been developed nor verified by a professional licensed land surveyor and shall not be nor is intended to be used as matters requiring delineation and location of true ground horizontal and/or vertical controls.

File: AtlanticCounty_SSA_110613_GAL.mxd Printed on: 10/26/2015