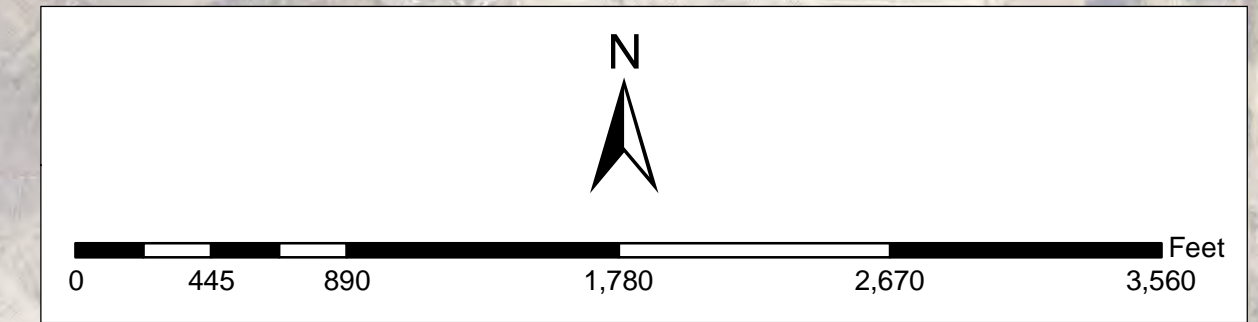




Folsom Future Wastewater Service Area Adopted November 6, 2013



- Sewer Service Area
- Municipal Buildings
- GS Parkway
- Municipal Roads
- AC Expressway
- US & State Highways
- County Routes
- Jurisdictions
- Municipalities

Camden County

Gloucester County

BUENA VISTA

HAMMONTON

HAMILTON

Locations of future pump stations, major interceptors, and trunk sewers are being provided for general information only and will not serve as the basis for any future consistency determinations or permit reviews unless the pump station, major interceptor or trunk sewer is part of a State or Federally funded project.

*Pursuant to N.J.A.C. 7:15, Riparian zones are 300 feet from top of bank (or centerline of a first order stream where no bank is apparent) for waters designated as Category One and all upstream tributaries within the same HUC. 14, 150 feet for waters designated Trout Production and all upstream waters, 150 feet for water designated Trout Maintenance and all upstream waters within one linear mile as measured along the length of the regulated water, 150 feet for any segments of water flowing through an area that contains documented habitat for threatened or endangered species of plant or animal, which is critically dependent on the surface water body for survival, and all upstream waters (including tributaries) within one linear mile as measured along the length of the surface water body, 150 feet for waters that run through acid-producing soils, and, 50 feet for all waters not designated as C1, trout waters, critically water dependent Threatened and/or Endangered Species Habitat, or associated with acid soils.

Surface waters that are designated Category One are listed in the Surface Water Quality Standards at N.J.A.C. 7:9B. The Department's "Surface Water Quality Standards" GIS data layer was utilized to determine these waters. The applicable 300 foot buffer has been applied to these waterways and removed from the proposed sewer service areas on the mapping. Letter with buffers have not been gradually removed from the sewer service area but are not proposed for sewer service. Counties may map out the sewer with buffers also for the 300 foot buffers are the minimum, the lesser buffers are removed during the build-out analysis. Jurisdictional determinations by the Department will be utilized to determine the extent of the sewer service area on individual lots.

Furthermore, compliance with the riparian zone standards has been demonstrated by the adoption of municipal Riparian Corridor Ordinances, which have been updated to be in compliance with the Flood Hazard Control Act Rules (N.J.A.C. 7:13) and Water Quality Management Rules (N.J.A.C. 7:15). See municipal chapters for additional information.

All existing, new, or expanded industrial pretreatment facilities requiring Significant Indirect User (SUI) permits and/or Treatment Works Approvals, and which are located within the specified sewer service area, are deemed to be consistent.

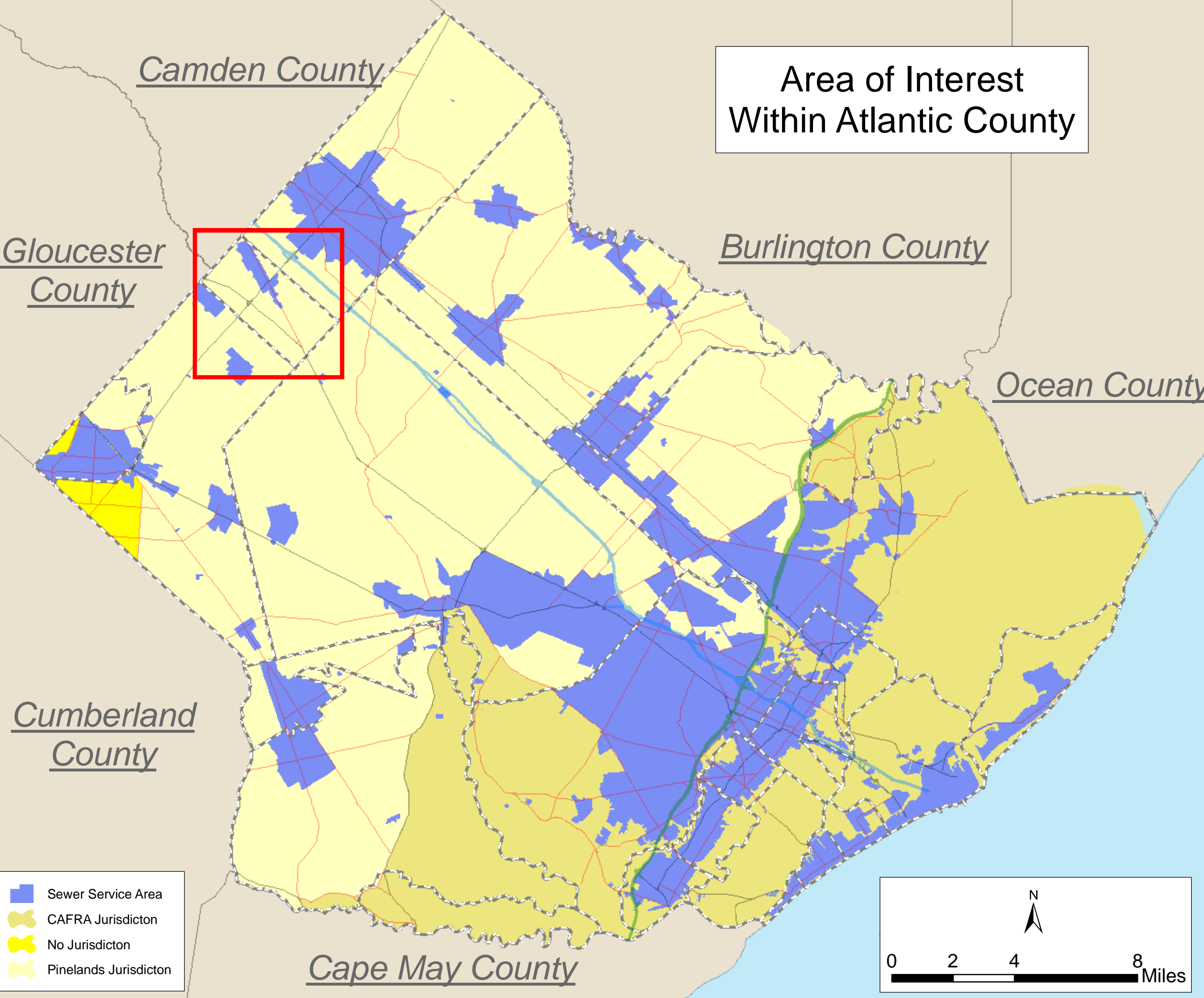
Preexisting grant conditions and requirements (from Federal and State grants or loans for sewerage facilities) which provide for restriction of sewer service to environmentally sensitive areas, are unaffected by adoption of this WMP and compliance required. Please see municipal WMP Chapters for the existence of any applicable environmentally sensitive areas in which Federal 201 grant limitations prohibit the extension of sewer service.

Individual subsurface sewage disposal systems (ISSDS) for individual residences can only be constructed in designated sewer service areas if legally enforceable guarantees are provided, before such construction, that use of such systems will be discontinued when the designated sewer service becomes available. This applies to ISSDS that require certification from the Department under the Healthy Improvement Sewerage and Pollution Act (NJSEA 11:23) or individual Treatment Works Approval or New Jersey Pollutant Discharge Elimination System Permits (under NJAC 7:14A). It also applies to ISSDS which require only local approval. Compliance with the connection requirement has been demonstrated through adoption of municipal and/or sewerage utility Ordinances. See municipal chapters for additional information.

Development in areas mapped as wetlands, flood prone areas, suitable habitat for endangered and threatened species as identified on the Department's Landscape Map of Habitat for Endangered, Threatened and Other Priority Wildlife as Rank 3, 4, and 5, Natural Heritage Priority Sites, riparian zones, steep slopes, or designated river areas may be subject to special regulation under Federal or State statutes or rules, and interested persons should check with the Department for the latest information. Deposition of environmental sensitive areas for general information purposes only, and shall not be construed to define the legal geographic jurisdiction of such statutes or rules.

Areas located within the watershed of a Freshwater One (FW1) stream, as classified in the Surface Water Quality Standards, and/or that have Class 1-A ground water (Ground Water of Special Ecological Significance), as classified in the Ground Water Quality Standards, are identified as "Non-discharge water areas based on the Surface Water Quality Standards at N.J.A.C. 7:10, and/or the Ground Water Quality Standards at N.J.A.C. 7:9-4". Where this requirement has been studied and reviewed as part of the WMP process this classification appears on Map 02. Non-discharge water areas shall be maintained in their natural state (not subject to agriculture) and are subject to restrictions including, but not limited to, the following: 1) DEP will not approve any pollutant discharge to ground water nor approve any human activity which results in a degradation of natural quality except for the upgrade or continued operation of existing facilities serving existing development. For additional information please see the Surface Water Quality Standards at N.J.A.C. 7:9B, and/or the Ground Water Quality Standards at N.J.A.C. 7:9-4.

Proposed developments lying into existing and proposed sewer service areas which require coastal permits must demonstrate compliance with all applicable sections of the Coastal



Facility Name	NUPRIS
Alpine Village Mobile Home Court	NJ0107824
L's Restaurant	NJ0107977
Somerset Ona Marina LLC	NJ0106060
Greentree Golf Course	NJ0119220
Marin Apartments	NJ0114887
Equal Manor - Atlantic County Park	NJ0119459
The Fareway Restaurant	NJ0112827
Oceanville Station	NJ0107231
Gallop and Trot Golf Club Plant	NJ0106886
Chestnut Lake Campground	NJ0112348
Holly River Campground LLC	NJ0008731
Lazy River Campground	NJ0006598
Yogi Berra - Jollystone Park	NJ0005090
Pleasant Valley Campground	NJ0005103
Oaks of Weymouth Plant	NJ0006682
Alpine Village Mobile Home Court	NJ0107824
Richard Glass Co.	NJ0004474
Winding River Campground	NJ0006367
Pilgrim Academy	NJ0114732
Pilgrim Academy	NJ0114732
Holly Acres Best Holiday Trav-L-Park	NJ0006707
Mullica Woods Mobile Home Park	NJ0112840
Buena Family Manor	NJ0005498
Indian Branch Park Campground	NJ0102717
Snyder, Inc.	NJ0003441
Platinum Playgroup	NJ0108976
Liberty Square Enterprises LLC	NJ0114937
Pandora Lakes Campground	NJ0006687
Smithville Professional Center	NJ007679
Bay Breeze Village Mobile Home Park	NJ0004417
Central Atlantic Family Campground	NJ0005120
Egg Harbor River Resort	NJ0004379
Oakforest Mobile Home Park LLC	NJ0004336
Blairstown Hill Campground	NJ0006366
C&E Carriers Inc.	NJ0005101
Country Oaks	NJ0006291
Weymouth Twp. Elementary School plant	NJ010613
Elwood School	NJ0006349
East Manor Elementary School	NJ0114231
Folsom Elementary School	NJ0102892
Mornings at the estate	NJ007632
West Wind Lakes Campground	NJ0118738
South Jersey Gas Company	NJ0102651
St. Augustine Preparatory School	NJ0112042
De Vette and Giarro	NJ0003214
Villa Fiumana Restaurant	NJ0108254
Wilmet Glass Co	NJ0074004

This map is for demonstration purposes only and was not developed in accordance with National Map Accuracy Standards. Any use of this product with respect to accuracy and precision shall be the sole responsibility of the user. The map was developed, in part, using New Jersey Department of Environmental Protection Geographic Information System (GIS) digital data, in conjunction with the Atlantic County Office of Geographic Information Systems, but this secondary product has not been verified by NJDEP and is not state authorized. The geodetic accuracy and precision of the GIS data contained in this map has not been developed or verified by a professional licensed land surveyor and shall not be used or intended to be used in matters requiring definition and location of true ground horizontal and/or vertical controls.

File: AtlanticCounty_SSA_110613_FOL.mxd Printed on: 10/19/2015