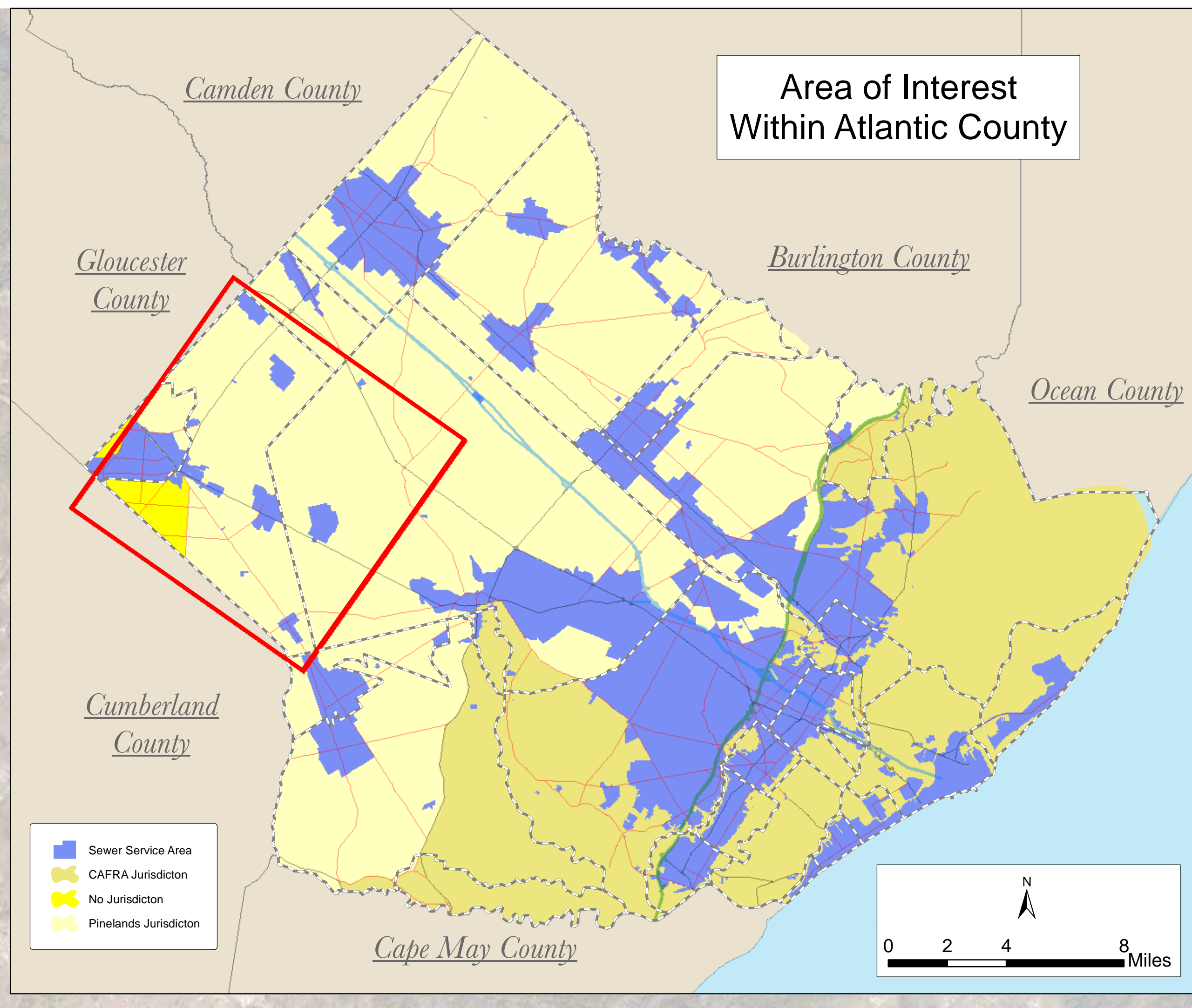


# Buena Vista Future Wastewater Service Area Adopted November 6, 2013



Facility Name	NUPRS
Alpine Village Mobile Home Court	N00107824
L's Restaurant	N00167797
Somerset Cava Marina LLC	N00109099
Greenlee Golf Course	N00139220
Marin Apartments	N00146897
East Manor - Atlantic County Park	N00139459
The Fairway Restaurant	N00128827
Oceanville Station	N00167231
Callaway National Golf Club Plant	N0108895
Chesnut Lake Campground	N00135348
Hickory Haven Campground LLC	N00057531
Lacy River Campground	N00085956
Top Boats, Jollystone Park	N00085950
Roscoe Valley Campground	N00081105
Dale of Weymouth Park	N0006862
Alpine Village Mobile Home Court	N00107824
Roscoe Glass Co.	N00054474
Winding River Campground	N00053367
Ripm Academy	N00134732
Ripm Academy	N00134732
Holly Acres Best Holiday Trax-L-Park	N00085707
Mulca Woods Mobile Home Park	N00112840
Buena Family Manor	N00054848
Indian Branch Park Campground	N0102717
Scholar, Inc.	N0035441
Platinum Reground	N00169765
Liberty Square Enterprises LLC	N00134937
Phonetic Lakes Campground	N00089697
Shirley Professional Center	N0075879
Bay Breeze Village Mobile Home Park	N00084417
Colonial Manor's Family Campground	N00087720
Egg Harbor River Resort	N00084379
Oakcrest Mobile Home Park LLC	N00054330
Baileys Hill Campground	N00053636
G&L Camper's Inc.	N0051071
Country Oaks	N00085251
Waymouth Twp. Elementary School plant	N010613
Elwood School	N0008340
East Manor Elementary School	N00152431
Folsom Elementary School	N00152892
Moore's at Sixville site	N0076732
Red Wing Lake Campground	N00130785
South Jersey Gas Company	N0109651
St. Augustine Preparatory School	N0132842
Swire's site Casino	N00083174
Villa Fiorina Restaurant	N00168254
Wilmed Glass Co.	N0074004

"Locations of future pump stations, major interceptors, and trunk sewers are being provided for general information only and will not serve as the basis for any future consistency determinations or permit reviews unless the pump station, major interceptor or sewer is part of a State or Federally funded project."

"Pursuant to N.J.A.C. 7:15, Riparian zones are 300 feet from top of bank (or centerline of a first order stream where no bank is apparent) for waters designated as Category One and all upstream tributaries within the same HUC 14-150 feet for waters designated Trout Production and all upstream waters, 150 feet for water designated Trout Maintenance and all upstream waters within one linear mile as measured along the length of the regulated water, 150 feet for any segment of water flowing through an area that contains documented habitat for a threatened or endangered species of plant or animal, which is critically dependent on the surface water body for survival, and all upstream waters (including tributaries) within one linear mile as measured along the length of the surface water body, 150 feet for waters that run through and/or bordering a wetland, and 50 feet for all waters not designated as C1, trout waters, critically water dependent Threatened and/or Endangered Species Habitat, or associated with acid soils."

Surface waters that are designated Category One are listed in the Surface Water Quality Standards at N.J.A.C. 7:9B. The Department's Surface Water Quality Standards GIS data layer was utilized to determine these waters. The applicable 300 foot buffer has been applied to these waters and removed from the proposed sewer service areas on the mapping. Lesser width buffers have not been graphically removed from the sewer service area but are not proposed for sewer service. Counties may map out the lesser width buffers also but the 300 foot buffers are the minimum. The lesser buffers are removed during the build-out analysis. Jurisdictional determinations by the Department will be utilized to determine the extent of the sewer service area on individual lots.

Furthermore, compliance with the riparian zone standard has been demonstrated by the adoption of municipal Riparian Corridor Ordinances, which have been updated to be in compliance with the Flood Hazard Control Act Rules (N.J.A.C. 7:13) and Water Quality Management Rules (N.J.A.C. 7:15). See municipal chapters for additional information."

"All existing, new, or expanded industrial pretreatment facilities requiring Significant Indirect User (SIU) permits and/or Treatment Works Approvals, and which are located within the specified sewer service area, are deemed to be consistent."

"The existing grant conditions and requirements (from Federal and State grants or loans for sewerage facilities) which provide for restriction of sewer service to environmentally sensitive areas, are unaffected by adoption of this WMP and compliance is required. Please see municipal WMP chapters for the existence of any applicable environmentally sensitive areas in which Federal 201 grant limitations prohibit the extension of sewer service."

"Individual subsurface sewage disposal systems (SSDS) for individual residences can only be constructed in depicted sewer service areas if legally enforceable guarantees are provided, before such construction, that use of such systems will be discontinued when the depicted sewer service becomes available. This applies to SSDS that require certification from the Department under the Riparian Improvement Sewerage and Facilities Act (N.J.A.C. 7:15-23) or individual Treatment Works Approval of New Jersey Pollutant Discharge Elimination System Permits (under NJAC 7:14A). It also applies to SSDS which require only local approval. Compliance with the connection requirement has been demonstrated through adoption of municipal and/or sewerage authority ordinances. See municipal chapters for additional information."

"Development in areas mapped as wetlands, flood prone areas, suitable habitat for endangered and threatened species as identified on the Department's Landscape Maps of Habitat for Endangered, Threatened and Other Priority Wildlife as Rank 3, 4, and 5, Natural Heritage Priority Sites, riparian zones, steep slopes, or designated over areas may be subject to special regulation under Federal or State statutes or rules, and interested persons should check with the Department for the latest information. Depiction of environmental features shall be for general information purposes only, and shall not be construed to define the legal geographic jurisdiction of such statutes or rules."

"Areas located within the watershed of a Freshwater One (FWO) stream, as classified in the Surface Water Quality Standards, and/or that have Class I-a ground water (Ground Water of Special Ecological Significance), as classified in the Ground Water Quality Standards, are identified as "Non-degradation water areas based on the Surface Water Quality Standards at N.J.A.C. 7:15. Within the Ground Water Quality Standards at N.J.A.C. 7:15-23, where this requirement has been studied and reviewed as part of the WMP process the classification appears on Map #3. Non-degradation water areas shall be maintained in their natural state, but aside for point-source discharges, and are subject to restrictions including, but not limited to, the following: 1. Use shall not approve any project (including a ground water use) which results in degradation of natural quality except for the upgrade or continued operation of existing facilities serving existing development. For additional information please see the Surface Water Quality Standards at N.J.A.C. 7:9B, and/or the Ground Water Quality Standards at N.J.A.C. 7:9-6."

"Proposed developments lying into existing and proposed sewer service areas which require coastal permits must demonstrate compliance with all applicable sections of the Coastal

Sewer Service Area

Waste Water Treatment Plant

Municipal Buildings

GS Parkway

Municipal Roads

AC Expressway

US & State Highways

County Routes

Jurisdictions

Municipalities

This map is for demonstration purposes only and was not developed in accordance with National Map Accuracy Standards. Any use of this product with respect to accuracy and precision shall be the sole responsibility of the user. The map was developed, in part, using New Jersey Department of Environmental Protection Geographic Information System (GIS) digital data, in conjunction with the Atlantic County Office of Geographic Information Systems, but this secondary product has not been verified by NJDEP and is not state authorized. The geodetic accuracy and precision of the GIS data contained in this map has not been developed nor verified by a professional licensed land surveyor and shall not be nor is intended to be used in matters requiring delineation and location of true ground horizontal and/or vertical controls.

File: AtlanticCounty\_SSA\_110613\_BUV.mxd Printed on: 10/19/2015

