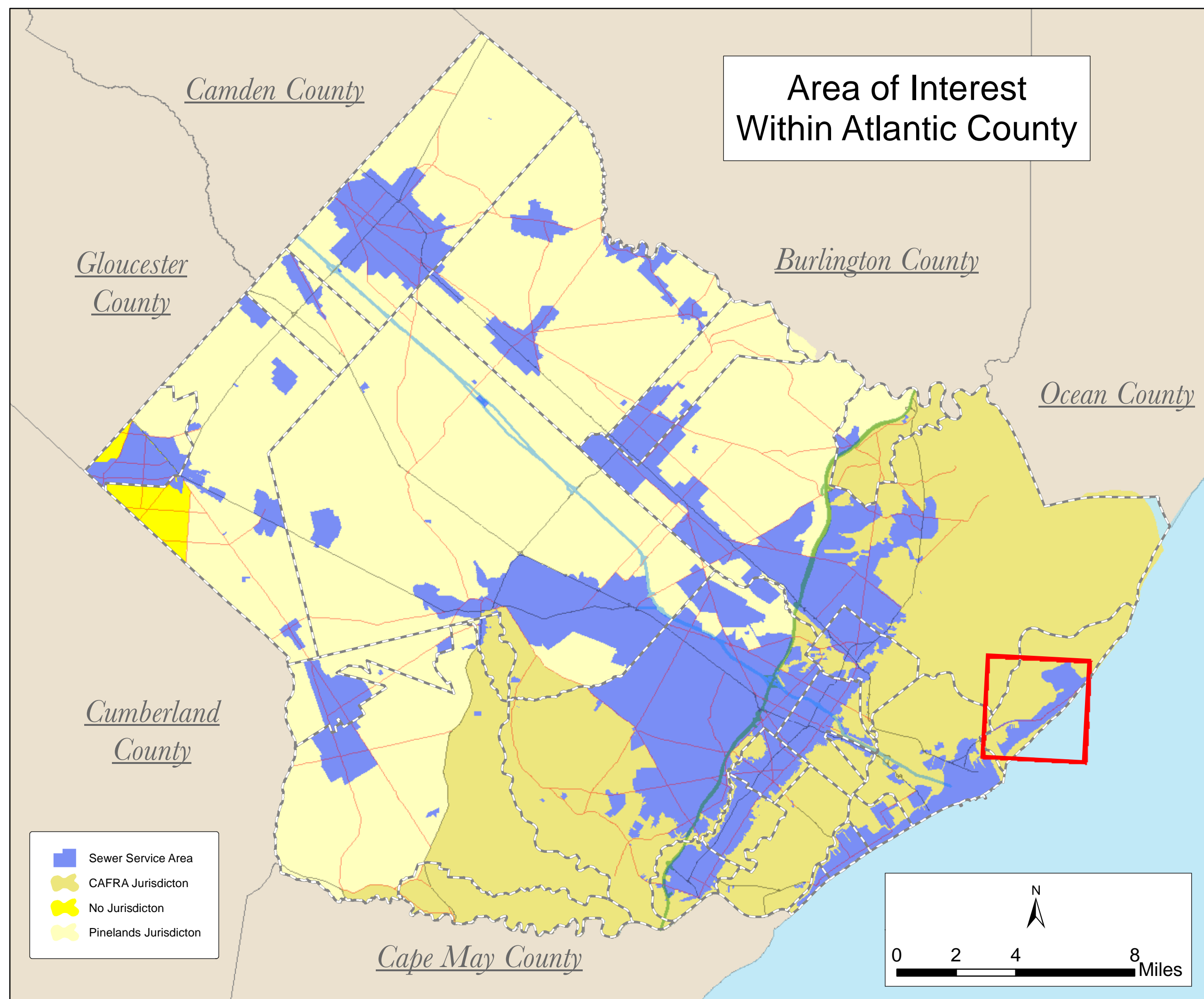




Brigantine Future Wastewater Service Area Adopted November 6, 2013



"Locations of future pump stations, major interceptors, and trunk sewers are being provided for general information only and will not serve as the basis for any future consistency determinations or permit reviews unless the pump station, major interceptor or trunk sewer is part of a State or federally funded project."

"Pursuant to N.J.A.C. 7:15, Riparian zones are 300 feet from top of bank (or centerline of a first order stream where no bank is apparent) for waters designated as Category One and all upstream tributaries within the same HUC 14. 150 feet for waters designated Trout Production and all upstream waters; 100 feet for water designated Trout Maintenance and all upstream waters within one linear mile as measured along the length of the regulated water; 150 feet for any segment of water flowing through an area that contains documented habitat for a threatened or endangered species of plant or animal, which is critically dependent on the surface water body for survival; and all upstream waters (including tributaries) within one linear mile as measured along the length of the surface water body; 150 feet for waters that run through acid-producing soils; and 50 feet for all waters not designated as C1, trout waters, critically water dependent Threatened and/or Endangered Species Habitat, or associated with acid soils."

Surface waters that are designated Category One are listed in the Surface Water Quality Standards at N.J.A.C. 7:9B. The Department's "Surface Water Quality Standards" GIS data layer was utilized to determine these waters. The applicable 300 foot buffer has been applied to these waterways and removed from the proposed sewer service areas on the mapping. Lesser width buffers have not been graphically removed from the sewer service area but are not proposed for sewer service. Counties may map out the lesser with buffers also but the 300' buffers are the minimum. The lesser buffers are removed during the buildout analysis. Jurisdictional determinations by the Department will be utilized to determine the eastern of the sewer service area on individual lots.

Furthermore, compliance with the riparian zone standard has been demonstrated by the adoption of municipal Riparian Ordinance, which has been updated to be in compliance with the Flood Hazard Control Act Rules (N.J.A.C. 7:13) and Water Quality Management Rules (N.J.A.C. 7:15). See municipal chapters for additional information."

"All existing, new, or expanded industrial pretreatment facilities requiring Significant Indirect User (SIU) permits and/or Treatment Works Approvals, and which are located within the specified sewer service area, are deemed to be consistent."

"Pre-existing grant conditions and requirements (from Federal and State grants or loans for sewerage facilities) which provide for restriction of sewer service to environmentally sensitive areas, are unaffected by adoption of this WMP and compliance is required. Please see municipal WMP Chapters for the existence of any applicable environmentally sensitive areas in which Federal 201 grant limitations prohibit the extension of sewer service."

"Individual subsurface sewage disposal systems (SSDS) for individual residences can only be constructed in depicted sewer service areas if legally enforceable guarantees are provided before such construction, that use of such systems will be discontinued when the depicted sewer service becomes available. This applies to SSDS that require certification from the Department under the Ready Improvement Sewerage and Facilities Act (NJSA 58:11-22) or individual Treatment Works Approval or New Jersey Pollutant Discharge Elimination System Permits (under NJAC 7:14a). It also applies to SSDS which require only local approval. Compliance with the construction requirement has been demonstrated through adoption of municipal and/or sewerage authority ordinances. See municipal chapters for additional information."

"Development in areas mapped as wetlands, flood prone areas, suitable habitat for endangered and threatened species as identified on the Department's Landscape Maps of Habitat for Endangered, Threatened and Other Priority Wildlife as Rank 1A, and 5, Natural Heritage Priority Sites, riparian zones, steep slopes, or designated river areas may be subject to special regulation under Federal or State statutes or rules, and interested persons should check with the Department for the latest information. Deposition of environmental features shall be for general information purposes only, and shall not be construed to define the legal geographic jurisdiction of such statutes or rules."

"Areas located within the watershed of a Freshwater One (FWO) stream, as classified in the Surface Water Quality Standards, and/or that have Class 1-A ground water (Ground Water of Superior Quality) shall be identified as the Ground Water Quality Standards. Areas identified as "Non-degradation water areas based on the Surface Water Quality Standards at N.J.A.C. 7:9B and/or the Ground Water Quality Standards at N.J.A.C. 7:9D." Where this requirement has been studied and reviewed as part of the WMP process, the classification depends on the data. Non-degradation water areas that do not maintain their natural state (as data for priority areas are subject to restrictive mapping, but not limited to, the following: 1) DEP will not approve any pollutant discharge to ground water nor approve any human activity which results in a degradation of natural quality except for the adoption or continuation of existing activities serving existing development. For additional information please see the Surface Water Quality Standards at N.J.A.C. 7:9B, and/or the Ground Water Quality Standards at N.J.A.C. 7:9D."

"Proposed developments lying in existing and proposed sewer service areas which require coastal permits must demonstrate compliance with all applicable sections of the Coastal

Facility Name	NJDEP ID
Alpina Village Mobile Home Court	NJ0017032
L's Restaurant	NJ0016797
Somerset Cove Marina LLC	NJ0010069
Gowanus Golf Course	NJ0013020
Marlin Apartments	NJ0014687
East Manor - Atlantic County Park	NJ0013949
The Brewer Restaurant	NJ0012827
Oceanville Station	NJ0016721
Coastway National Golf Club, Pratt	NJ0010886
Deerfield Lake Campground	NJ0015348
Hickory Haven Campground LLC	NJ0009573
Lady River Campground	NJ0009568
Yogi Berra's Jellystone Park	NJ0009590
Pleasant Valley Campground	NJ0009510
Camp of Weymouth River	NJ0009567
Alpina Village Mobile Home Court	NJ0010782
Richard Glass Co.	NJ0004474
Wooding River Campground	NJ0009567
Hygin Academy	NJ0013473
Hygin Academy	NJ0013472
Holly Acres Bed & Breakfast	NJ0009797
Milica Woods Mobile Home Park	NJ0011264
Sumas Family Manor	NJ0009548
Indian Branch Park Campground	NJ0010277
Scholar, Inc.	NJ0010441
Manum Neighborhood	NJ0016916
Liberty Square Enterprises LLC	NJ0013497
Paradise Lakes Campground	NJ0009667
Greenlee Professional Center	NJ0017679
Bay Breeze Village Mobile Home Park	NJ0008417
Colony Meadows Family Campground	NJ0009510
Egg Harbor River Beach	NJ0008478
Oakcrest Mobile Home Park LLC	NJ0009436
Seaboard Park Campground	NJ0009536
O&E Services Inc	NJ0010171
Country Oaks	NJ0009521
Thymouth Prep Elementary School	NJ0010423
The Wood School	NJ0009540
East Manor Elementary School	NJ0010431
Edison Elementary School	NJ0010460
Mornings of Seaside	NJ0010702
Red Wing Lakes Campground	NJ0013878
South Jersey Gas Company	NJ0009581
St. Augustine Preparatory School	NJ0013282
Seaside Casino	NJ0009514
Vila Roma Restaurant	NJ0016524
Wined Glass Co.	NJ0014004

- Sewer Service Area
- Municipal Buildings
- GS Parkway
- Municipal Roads
- AC Expressway
- US & State Highways
- County Routes
- Jurisdictions
- Municipalities

This map is for demonstration purposes only and was not developed in accordance with National Map Accuracy Standards. Any use of this product with respect to accuracy and precision shall be the sole responsibility of the user. The map was developed, in part, using New Jersey Department of Environmental Protection Geographic Information System (GIS) digital data, in conjunction with the Atlantic County Office of Geographic Information Systems, but this secondary product has not been verified by NJDEP and is not state authorized. The geographic accuracy and precision of the GIS data contained in this map has not been developed nor verified by a professional licensed land surveyor and shall not be used in matters requiring delineation and location of true ground horizontal and/or vertical.

File: AtlanticCounty_SSA_110613_BRG.mxd Printed on: 10/14/2015

ATLANTIC CITY