



# Atlantic City Expressway Interchange 5 Study Area

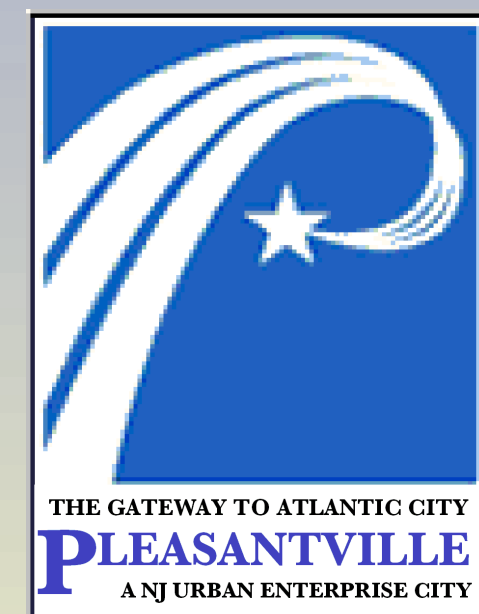


**ATLANTIC COUNTY**  
Dennis Levinson, County Executive  
Gerald DeRusso, County Administrator

Board of Chosen Freeholders  
Joseph F. Silipene, Chairman

Map Prepared by the  
Department of Regional Planning & Development  
Office of Geographic Information Systems

Joe Maher - Department Head  
Barry Hackett - Director of GIS  
MARCH 2005



### Main Legend

- Municipal Boundaries
- A.C. Expressway Interchanges
- Roadways & Line Features
  - GS Parkway
  - AC Expressway
  - State Highways
  - County Routes
  - Municipal Streets
  - Other
  - Alley
  - Railroad
  - Power Line
  - Airport
  - Tax Streets
  - Driveways & Parking

\*This map is for informational purposes only and does not constitute a contract. The user of this product with respect to any project or program shall be responsible for obtaining all necessary permits and approvals from the appropriate agencies. The user of this product with respect to any project or program shall be responsible for obtaining all necessary permits and approvals from the appropriate agencies. The user of this product with respect to any project or program shall be responsible for obtaining all necessary permits and approvals from the appropriate agencies.

## 2002 Aerial & 1995 Available Lands



**Legend**  
Available Parcels



*"The merging of GIS services provided by Atlantic County and the economic/demographic/business research conducted by the Center for Regional and Business Research, a part of the county college, adds a new dimension to the services that can be provided to both public agencies and private businesses. In projects where a geographic dimension is part of the research, GIS capabilities add not only a visual component but also an added analytical tool. These benefits were well demonstrated as part of the analysis of growth and economic development patterns along the SITA's Atlantic City Expressway interchanges as the attached maps illustrate."*

Richard Pernicaro, Ph.D.  
Center for Regional and Business Research  
City Center Campus



*"SJTPO has enjoyed a long and productive working relationship with the County's GIS Office. They have been extremely responsive to our requests, and their traffic volume forecast mapping will provide an excellent resource for our Congestion Management System activities and project programming."*

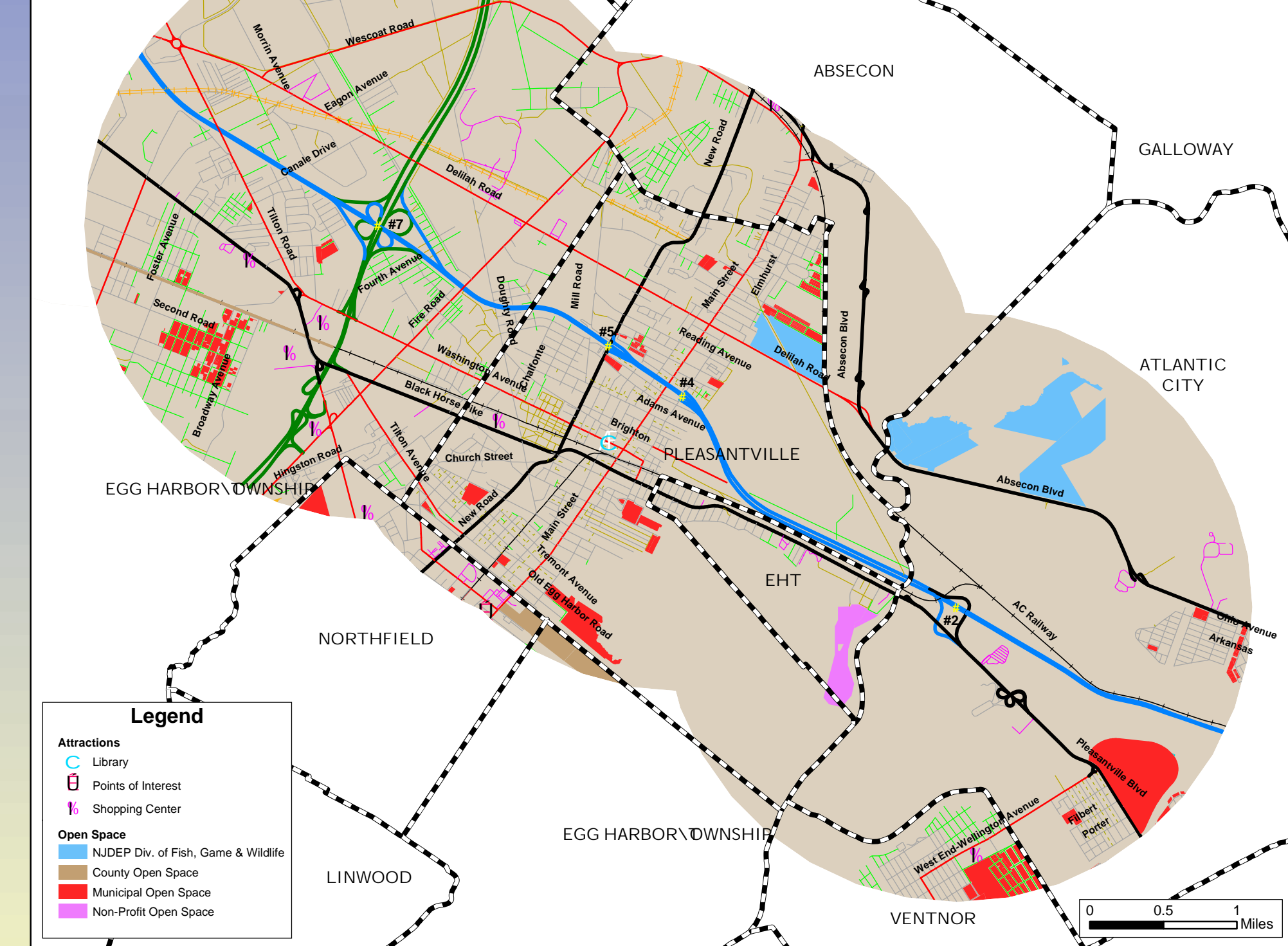
Tim Chelius  
Executive Director  
South Jersey Transportation Planning Organization



*"The Atlantic County Improvement Authority provides project management, financing and community development services to Atlantic County and its municipalities. We have benefited tremendously from the partnership that we have established with the Atlantic County Office of GIS (ACOGIS). The requirements of New Jersey's Improvement Authority Law and the guidelines of the programs that we administer dictate that our activities be directed to certain geographic areas based on a number of criteria such as census information, redevelopment information, and planning and zoning information. The maps and corresponding information provided to us by ACOGIS have made it possible to easily identify those eligible areas, and have given us the ability to target and provide assistance and allocate our resources in a more timely, efficient and effective manner."*

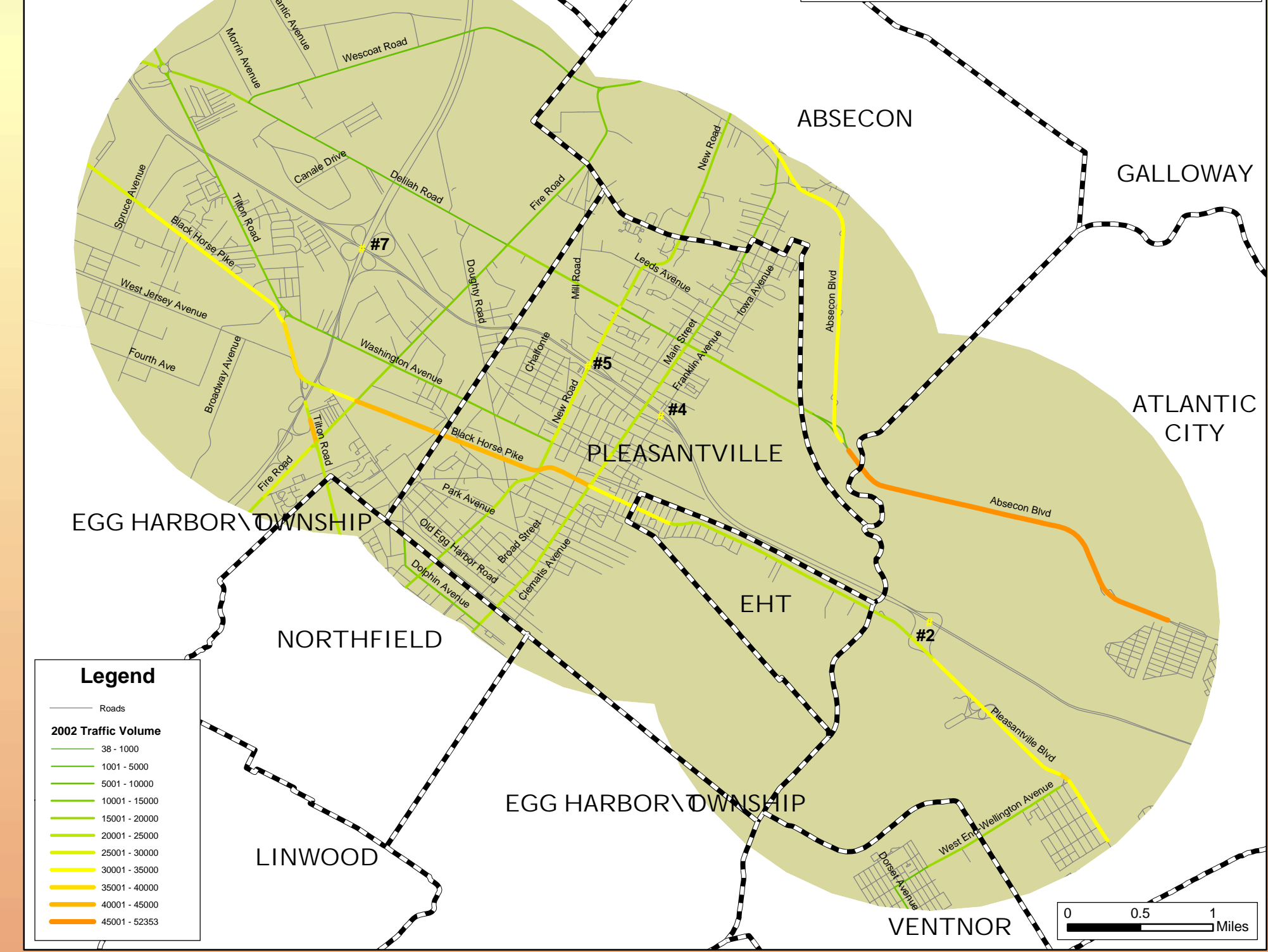
John Lamey  
County of Atlantic  
Department of ACIA

## Study Area Attractions & Open Space



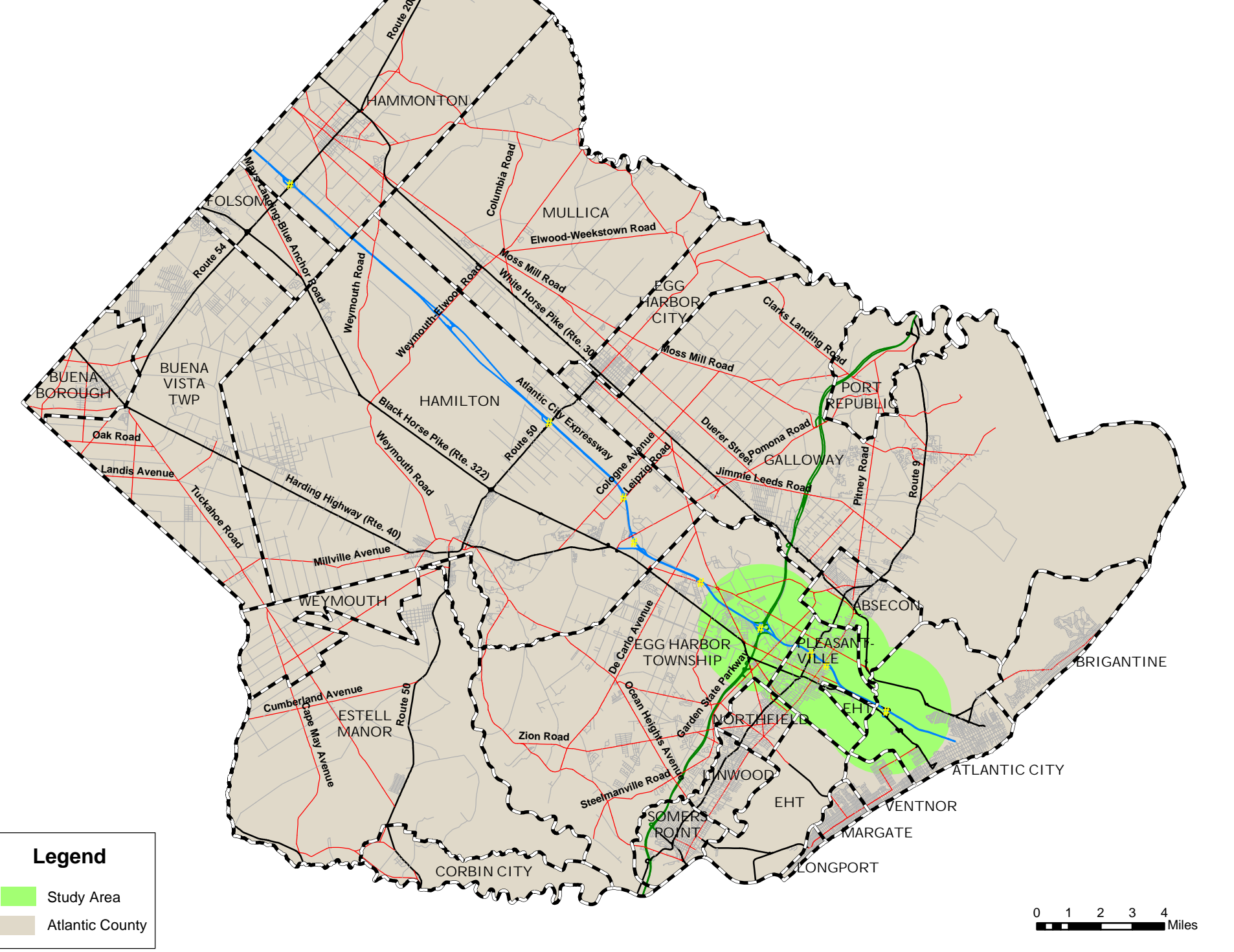
**Legend**  
Attractions  
Open Space

## Study Area 2002 Traffic Volume Projection



**Legend**  
2002 Traffic Volume

## Atlantic City Expressway Interchange Study Area Atlantic County, New Jersey

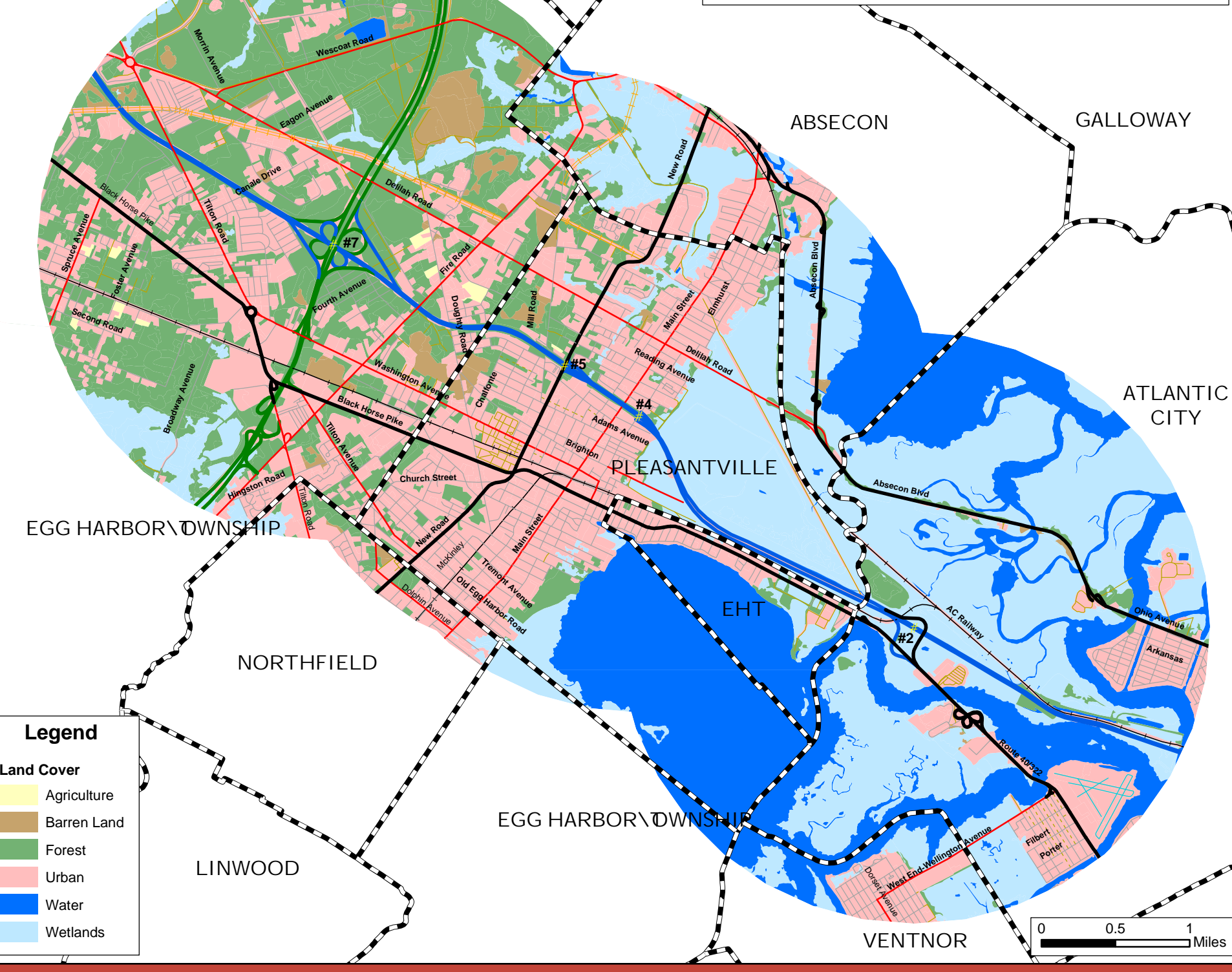


**Legend**  
Study Area  
Atlantic County

## Study Area 1995 Aerial & 1995 Roadways

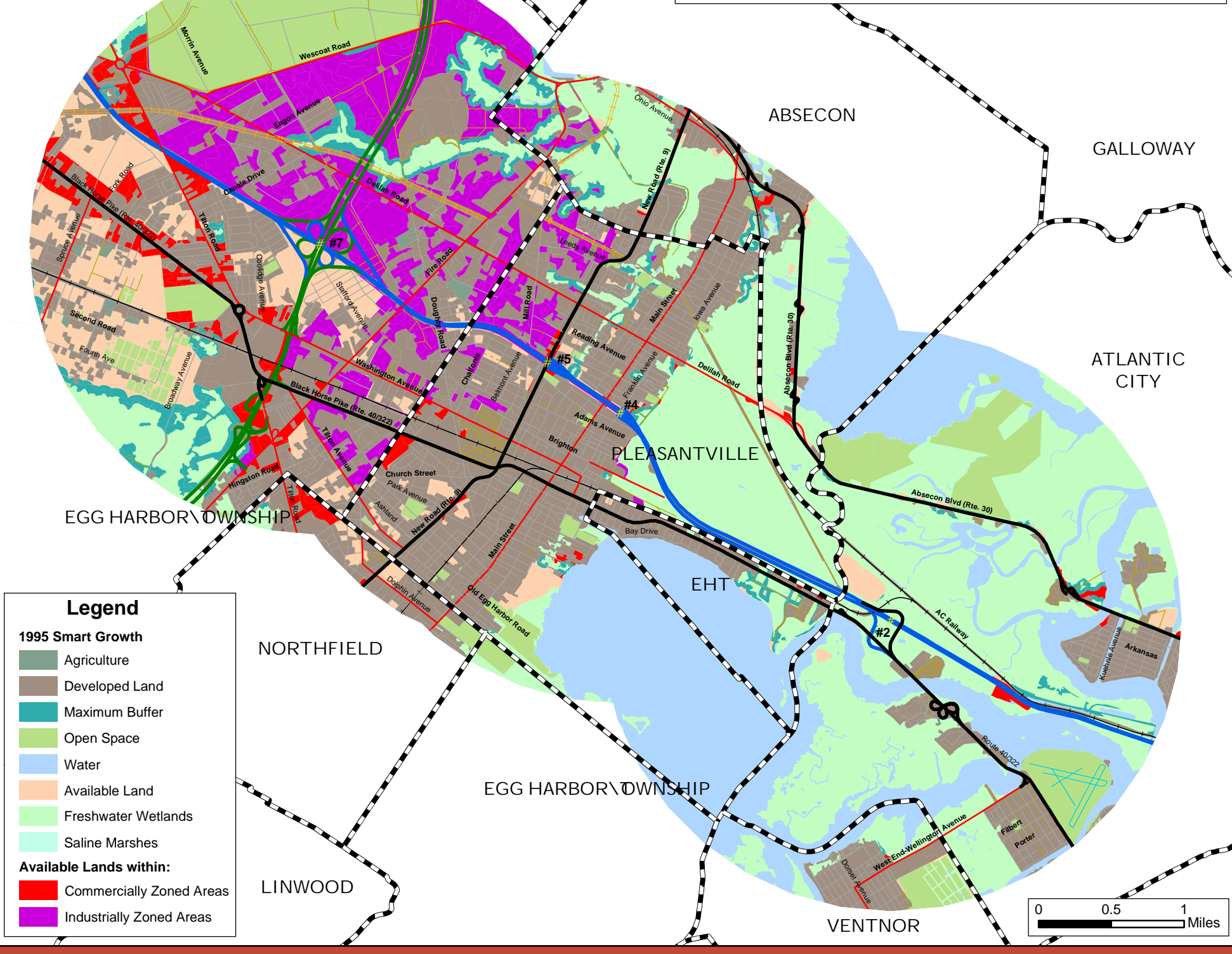


## Study Area 1995 Land Cover & 1995 Roadways



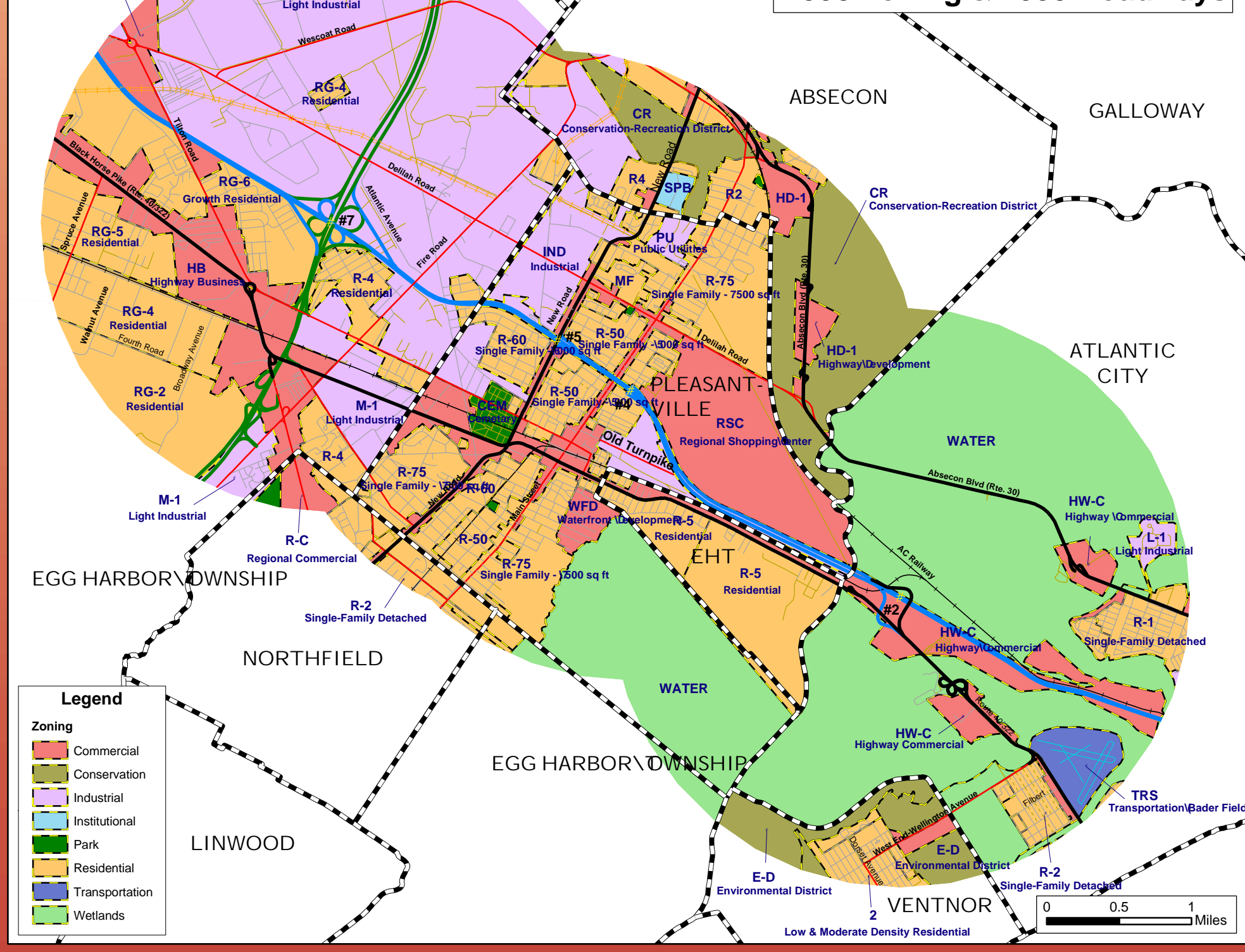
**Legend**  
Land Cover  
Roadways

## Study Area 1995 Smart Growth & 1995 Roadways



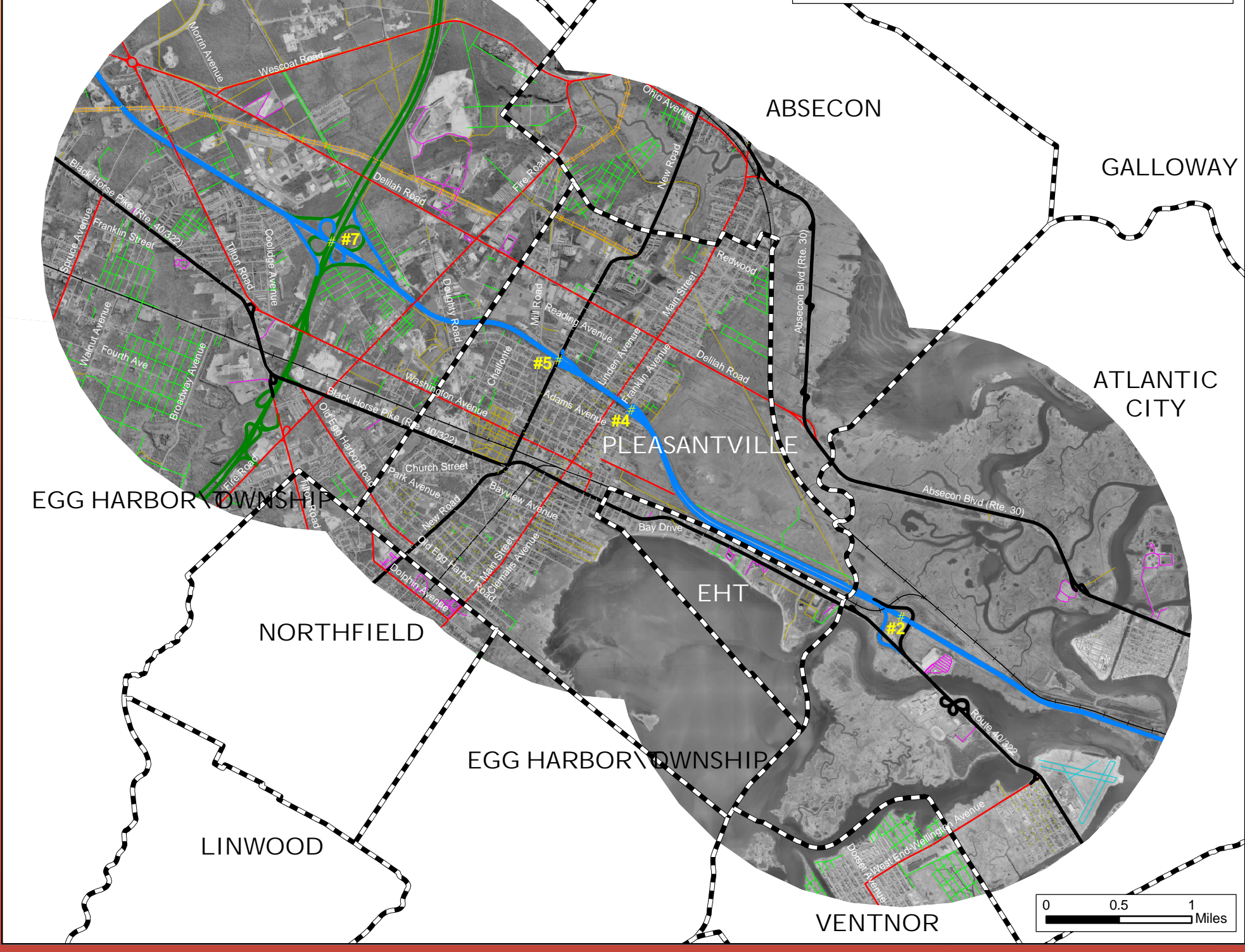
**Legend**  
1995 Smart Growth  
Roadways

## Study Area 1998 Zoning & 1995 Roadways



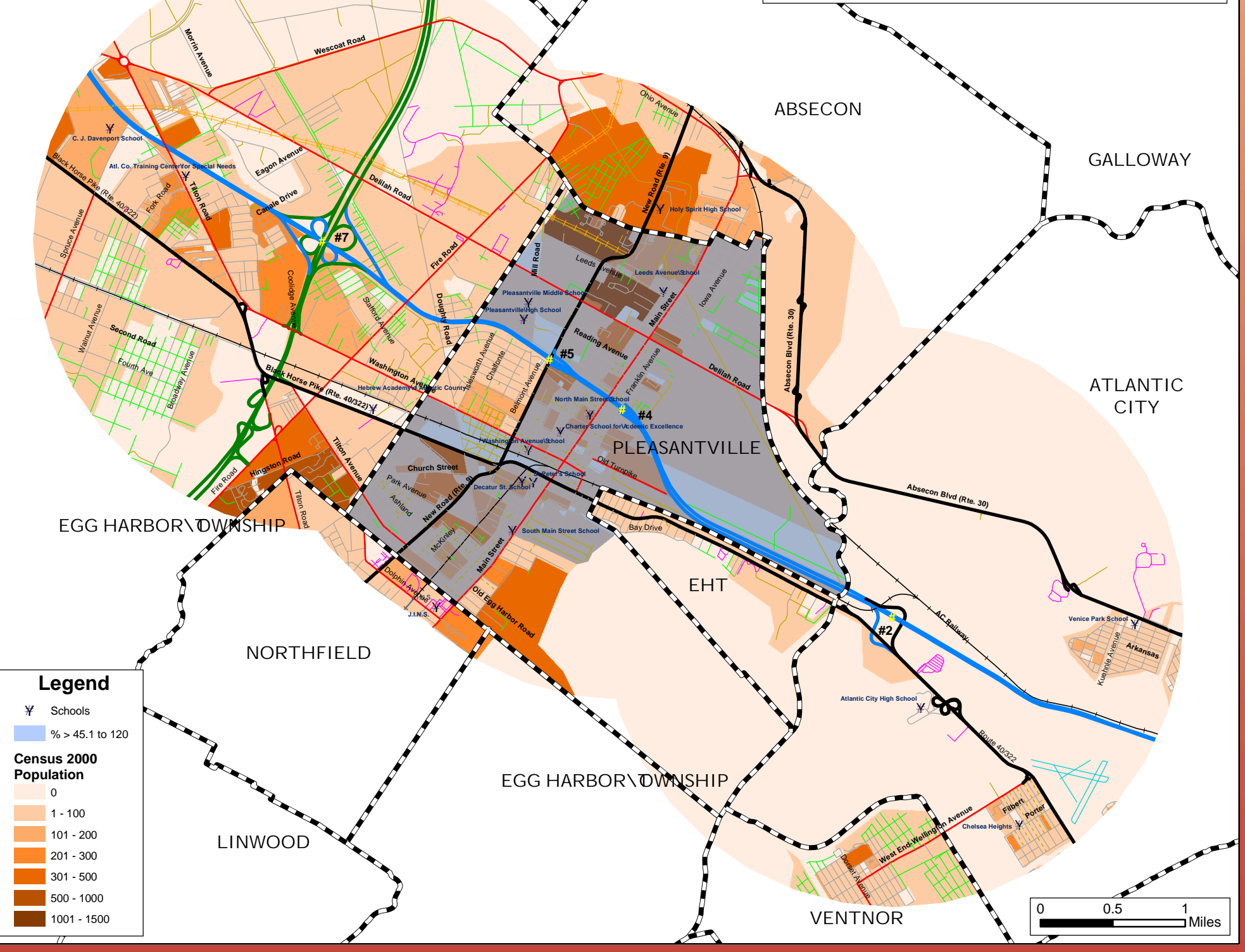
**Legend**  
Zoning  
Roadways

## Study Area 2000 Aerial & 2000 Roadways



**Legend**  
Roadways

## Study Area 2000 Census & 2000 Roadways



**Legend**  
2000 Census  
Roadways

## Study Area July 2025 Traffic Volume Projection



**Legend**  
July 2025 Traffic Volume