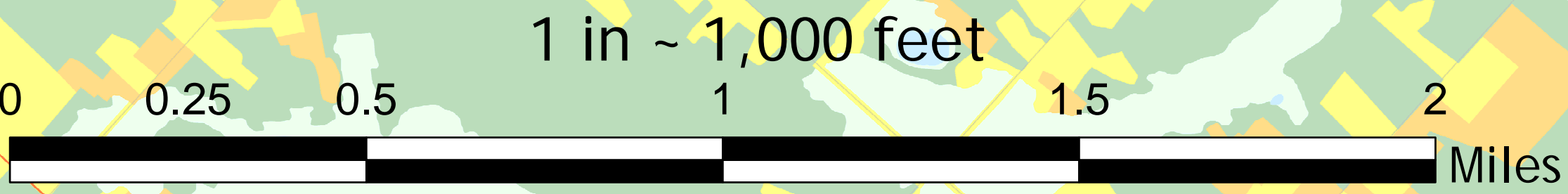
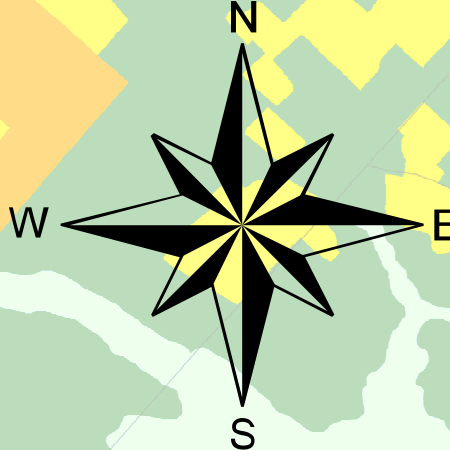
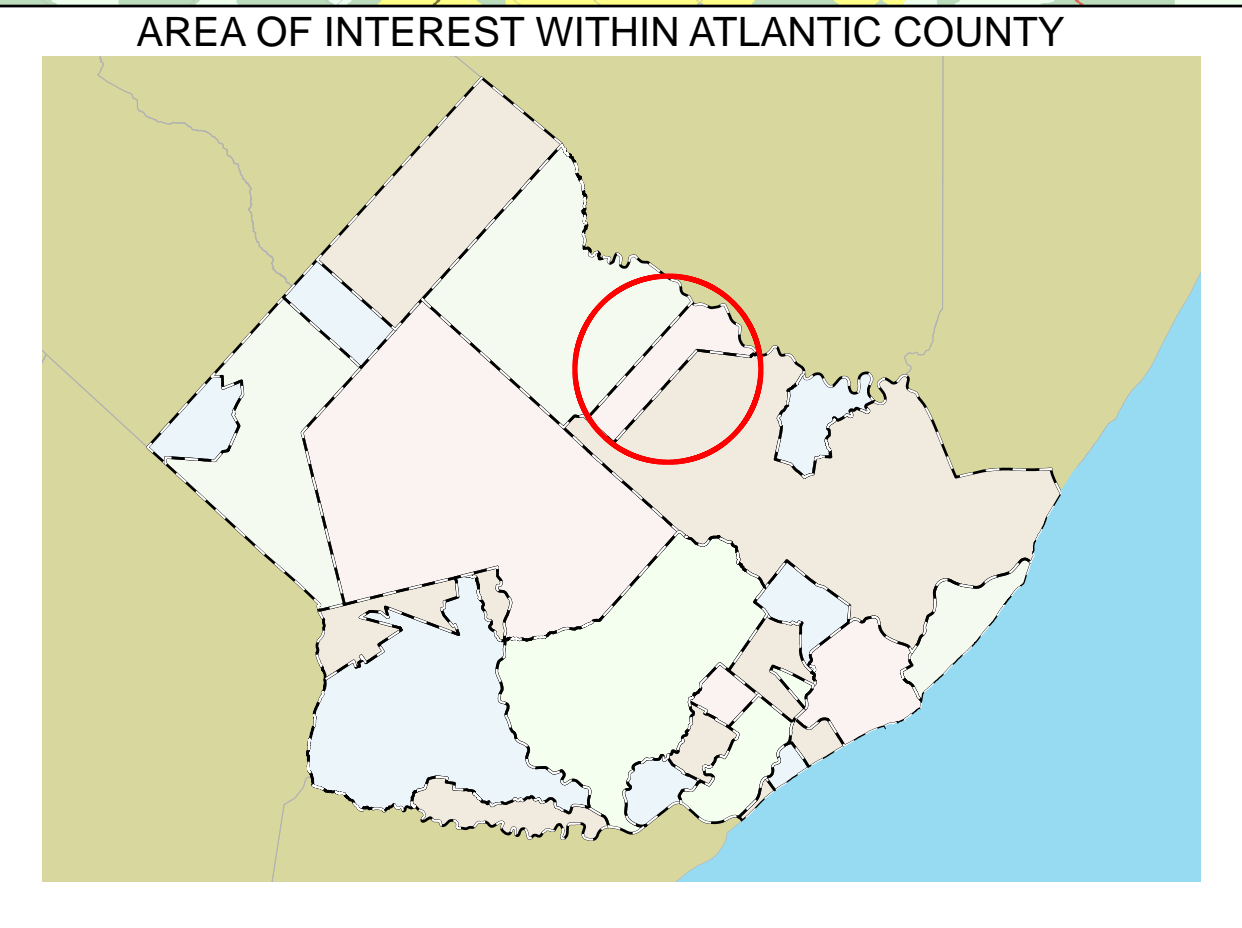
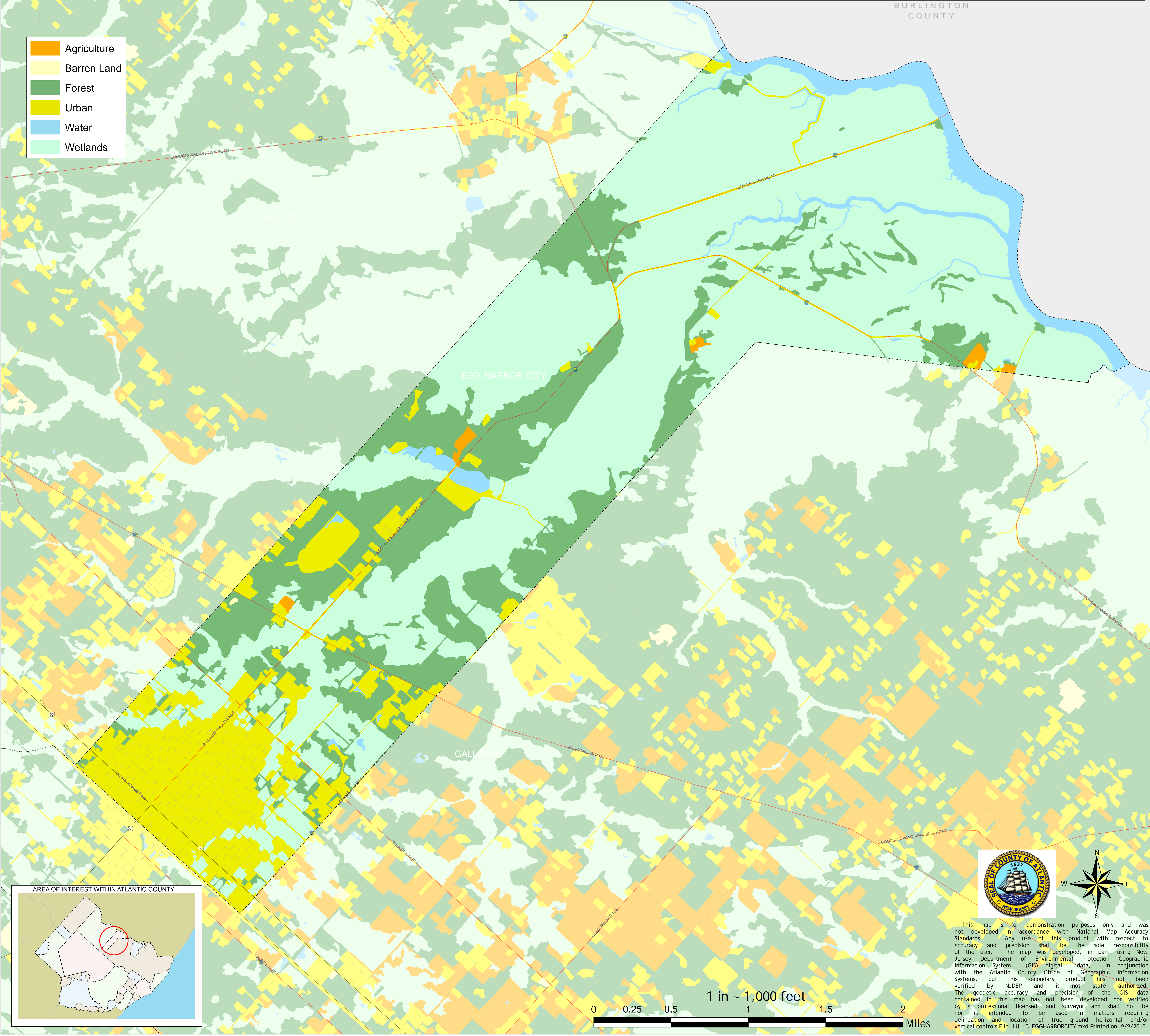


# EGG HARBOR CITY LAND USE/LAND COVER 2012 ATLANTIC COUNTY, NJ

TYPE	AREA (SQ FT) - 2007	AREA (SQ FT) - 2012	ACRES - 2007	ACRES - 2012	% OF AREA - 2007	% OF AREA - 2012	% CHANGE 2007-2012
AGRICULTURE	1538030.76	1287043.59	35.31	29.55	0.48%	0.41%	-0.079%
BARREN LAND	68659.67	45929.12	1.58	1.05	0.02%	0.01%	-0.007%
FOREST	70726634.9	67768192.85	1623.67	1555.75	22.28%	21.34%	-0.932%
URBAN	42051202.47	45290217.49	965.37	1039.72	13.24%	14.26%	1.02%
WATER	14106110.05	14036821.24	323.83	322.24	4.44%	4.42%	-0.022%
WETLANDS	189014457.92	189076891.46	4339.19	4340.63	59.53%	59.55%	0.02%

- Agriculture
- Barren Land
- Forest
- Urban
- Water
- Wetlands



This map is for demonstration purposes only and was not developed in accordance with National Map Accuracy Standards. Any use of this product with respect to accuracy and precision shall be the sole responsibility of the user. The map was developed, in part, using New Jersey Department of Environmental Protection Geographic Information System (GIS) digital data, in conjunction with the Atlantic County Office of Geographic Information Systems, but this secondary product has not been verified by NJDEP and is not state authorized. The geodetic accuracy and precision of the GIS data contained in this map has not been developed nor verified by a professional licensed land surveyor and shall not be nor is intended to be used in matters requiring delineation and location of true ground horizontal and/or vertical controls File: LU\_LC\_EGGHARBORCITY.mxd Printed on: 9/9/2015