

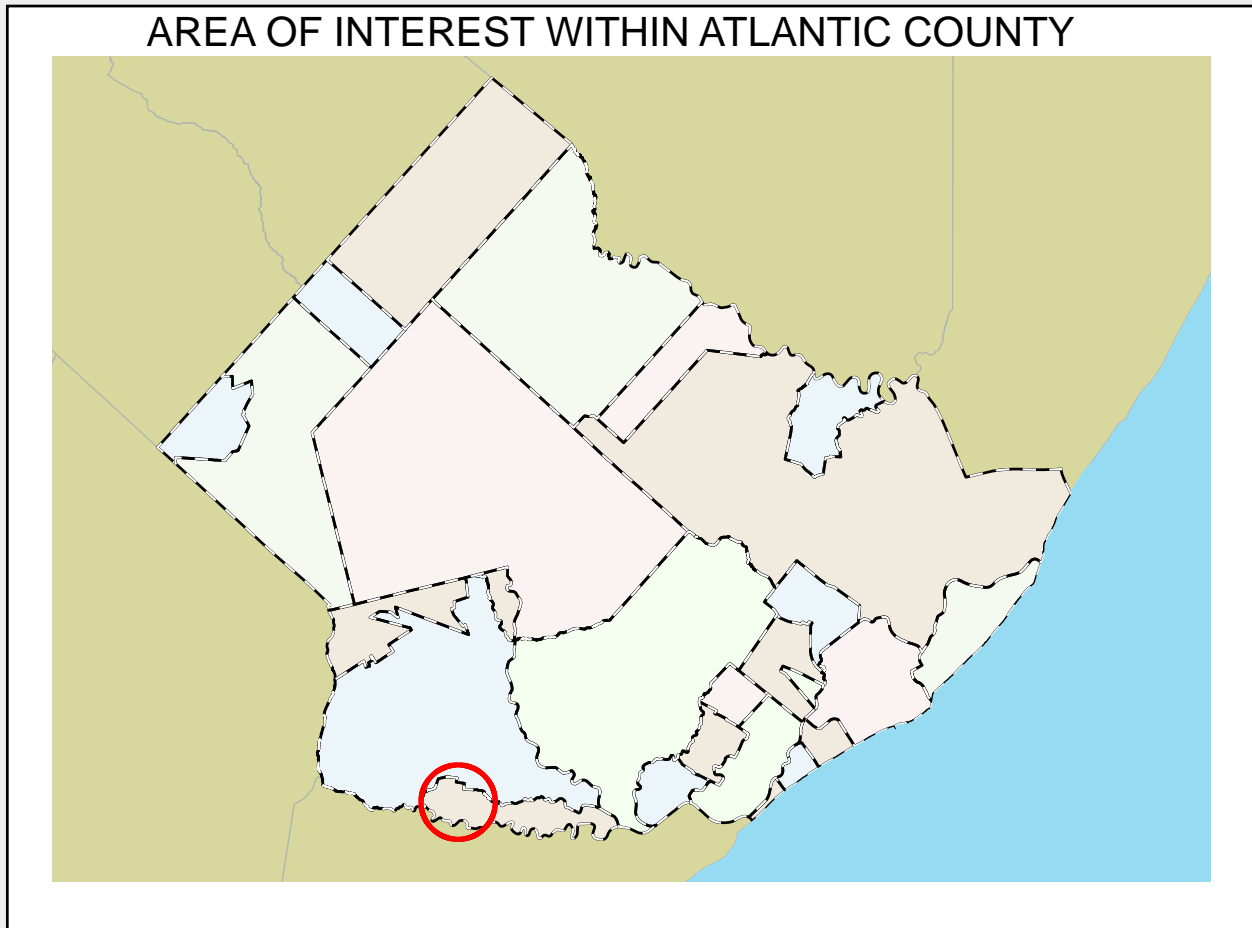
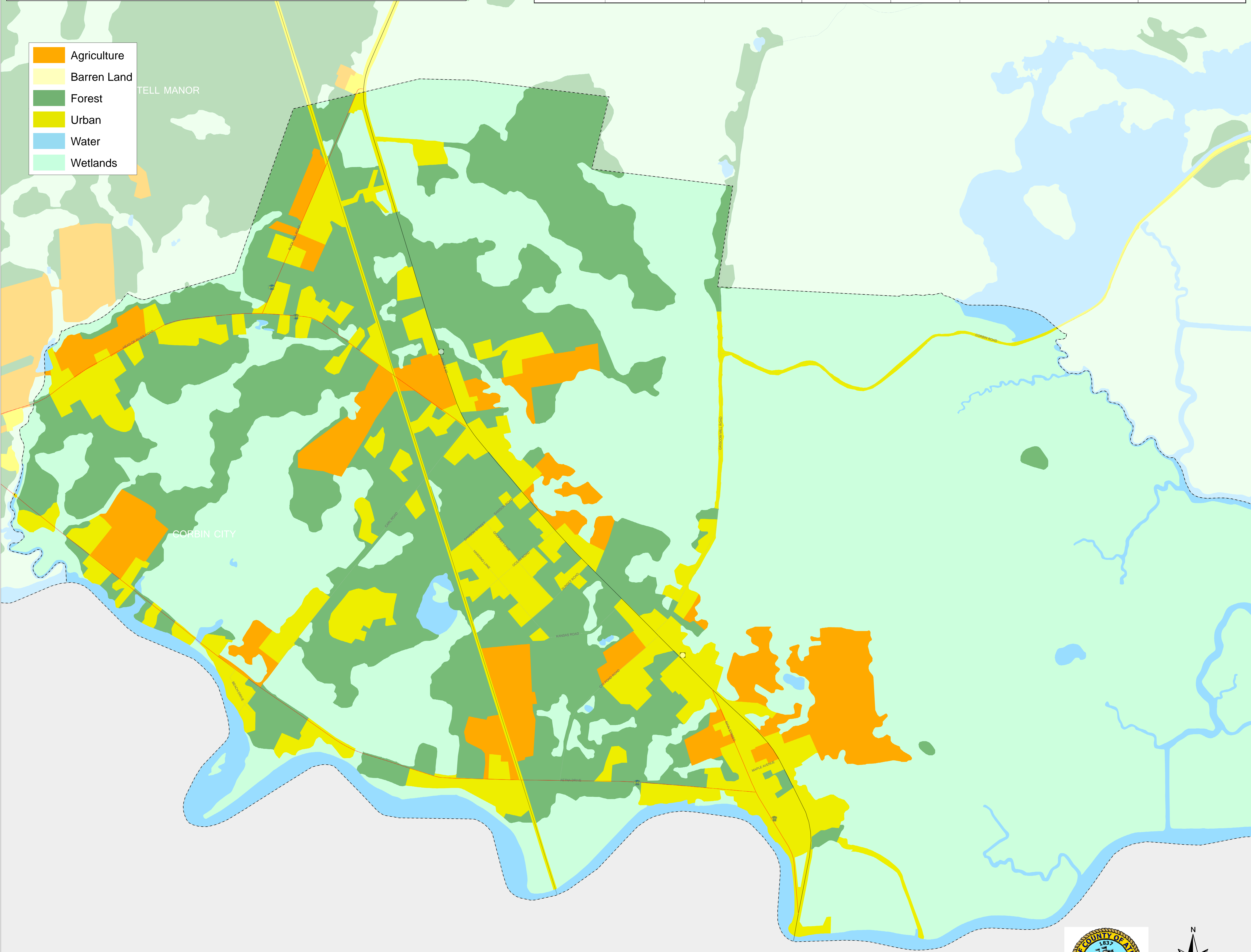
# CORBIN CITY

## LAND USE/LAND COVER 2012

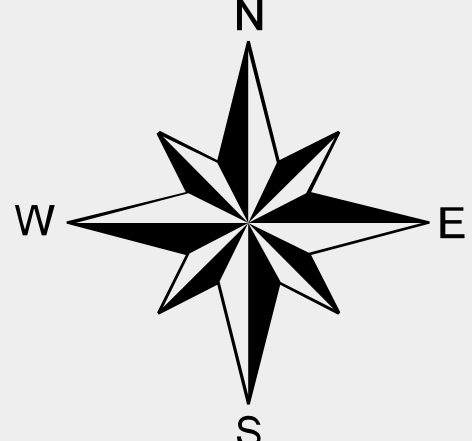
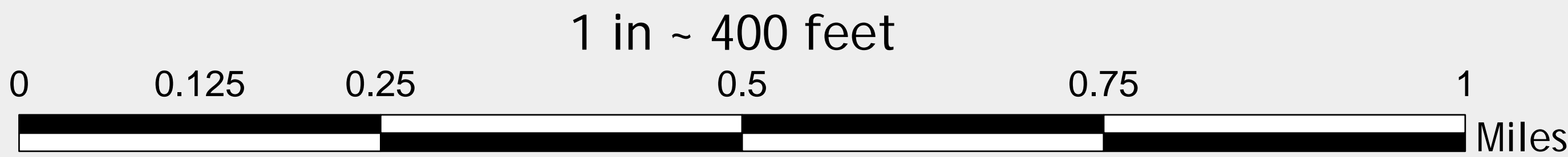
### ATLANTIC COUNTY, NJ

TYPE	AREA (SQ FT) - 2007	AREA (SQ FT) - 2012	ACRES - 2007	ACRES - 2012	% OF AREA - 2007	% OF AREA - 2012	% CHANGE 2007-2012
AGRICULTURE	6908295.26	6704102.88	158.59	153.91	2.76%	2.68%	-0.082%
BARREN LAND	0	0	0	0	0%	0%	0%
FOREST	24474566.98	24439074.75	561.86	561.05	9.78%	9.77%	-0.014%
URBAN	11031785.09	11320753.67	253.26	259.89	4.41%	4.53%	0.116%
WATER	36677284.16	36556495.14	842	839.23	14.66%	14.62%	-0.048%
WETLANDS	171036318.83	171107823.88	3926.47	3928.11	68.38%	68.41%	0.029%

- Agriculture
- Barren Land
- Forest
- Urban
- Water
- Wetlands



CAPE MAY  
COUNTY



This map is for demonstration purposes only and was not developed in accordance with National Map Accuracy Standards. Any use of this product with respect to accuracy and precision shall be the sole responsibility of the user. The map was developed, in part, using New Jersey Department of Environmental Protection Geographic Information System (GIS) digital data, in conjunction with the Atlantic County Office of Geographic Information Systems, but this secondary product has not been verified by NJDEP and is not state authorized. The geodetic accuracy and precision of the GIS data contained in this map has not been developed nor verified by a professional licensed land surveyor and shall not be nor is intended to be used in matters requiring delineation and location of true ground horizontal and/or vertical controls File: LU\_LC\_CORBINCITY.mxd Printed on: 9/14/2015