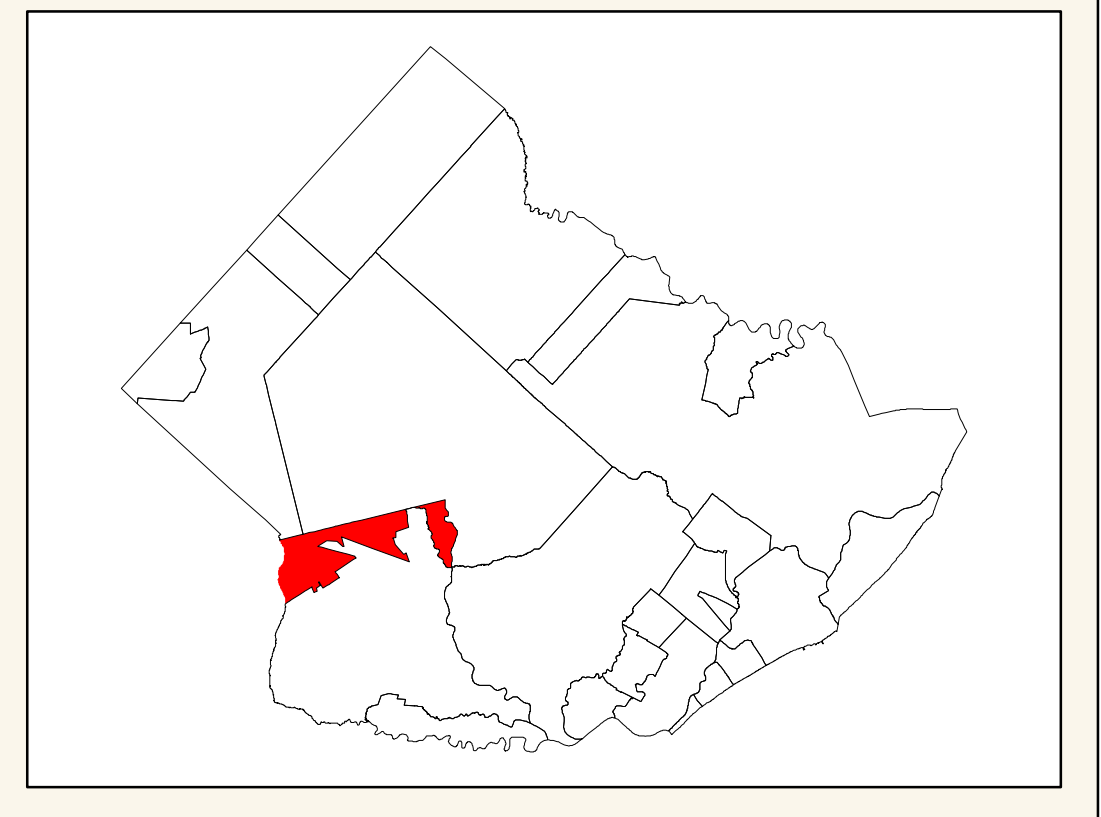


Weymouth Municipal Zoning Boundaries December 2011 Atlantic County, NJ



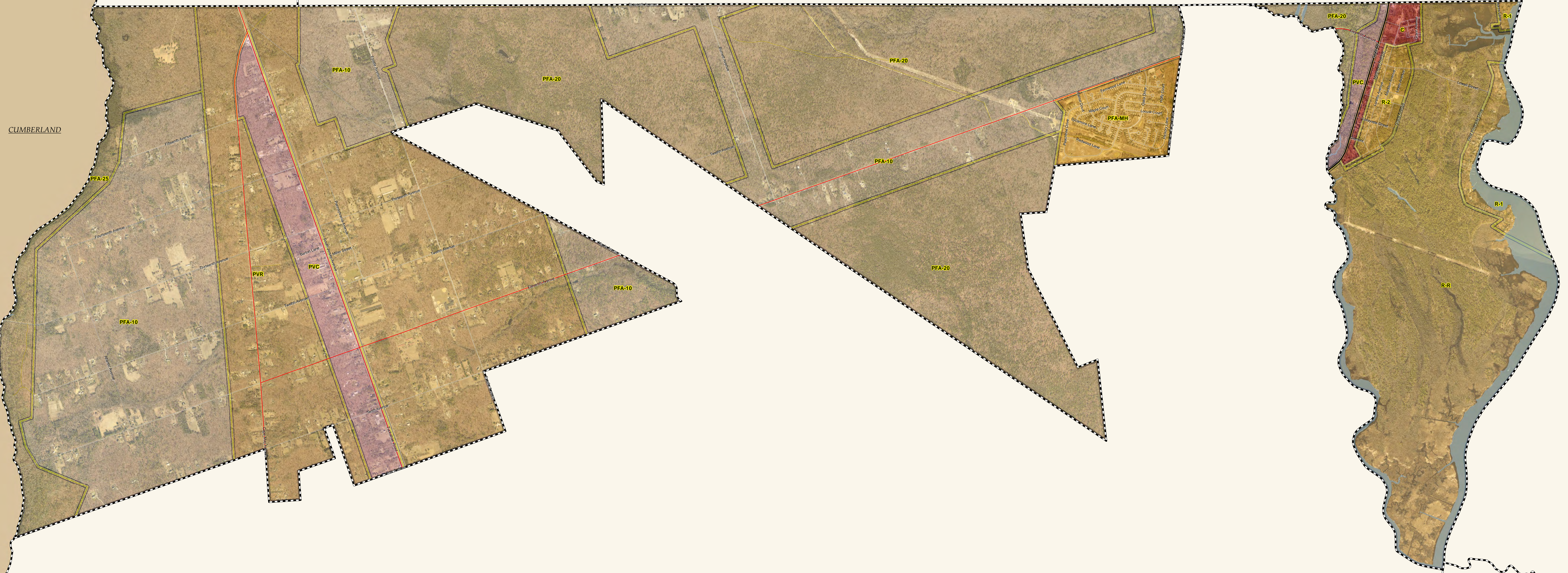
BUENA VISTA TOWNSHIP

HAMILTON TOWNSHIP

CUMBERLAND

ESTELL MANOR

EGG HARBOR TOWNSHIP



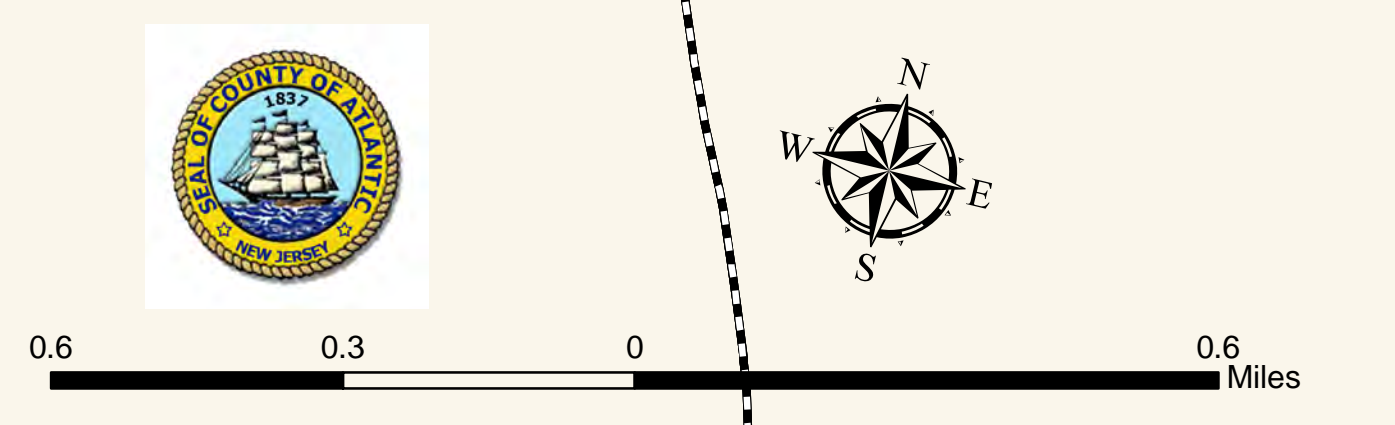
Weymouth Municipal Zoning

Zone	Description	Use	Base Lot	Min Lot	Min Density	Max Density	Revision Date	FAR	Total Acres
C	Commercial	COMMERCIAL	0.5 acres		0.00	0.00	7/26/2011	0.35	43.48
PFA-10	Pinelands Forest Area - 10 Acres	RESIDENTIAL	10 acres		0.10	0.10	7/26/2011	0.00	1956.66
PFA-20	Pinelands Forest Area - 20 Acres	RESIDENTIAL	20 acres		0.05	0.05	7/26/2011	0.00	1893.32
PFA-25	Pinelands Forest Area - 25 Acres	RESIDENTIAL	25 acres		0.03	0.03	7/26/2011	0.00	346.41
PFA-MH	Mobile Home Park	RESIDENTIAL	5,000 sf		8.70	8.70	7/26/2011	0.00	160.04
PVC	Pinelands Village Commercial	COMMERCIAL	5 acres		0.20	0.20	7/26/2011	0.35	303.97
PVR	Pinelands Village Residential	RESIDENTIAL	5 acres		0.20	0.20	7/26/2011	0.00	1637.00
R-1	Single Family Residential	RESIDENTIAL	1 acre		1.00	1.00	7/26/2011	0.00	116.19
R-2	Single Family Residential	RESIDENTIAL	10,000 sf		4.36	4.36	7/26/2011	0.00	62.37
R-R	Rural Residential - 5 Acre	RESIDENTIAL	5 acres		0.20	0.20	7/26/2011	0.00	1170.18

Legend

Zoning

- Agricultural
- Commercial
- Conservation / Wetlands
- Industrial / Institutional
- Residential
- Water
- US & State Highways
- County Routes
- Municipal Streets
- Other
- Alley
- Municipal Boundary
- County Boundary



NOTE: MUNICIPAL ZONING WITH 2013 AERIAL VIEW
 This map is for demonstration purposes only and was not developed in accordance with National Map Accuracy Standards. Any use of this product with respect to accuracy and precision shall be the sole responsibility of the user. The map was developed, in part, using New Jersey Department of Environmental Protection Geographic Information System (GIS) digital data, in conjunction with the Atlantic County Office of Geographic Information Systems. The data accuracy and precision of the GIS data contained in this map has not been developed nor verified by a professional licensed land surveyor and shall not be used in matters requiring delineation and location of new ground horizontal and/or vertical controls. File:WEY-Zoning2010.mxd 11/16/2011