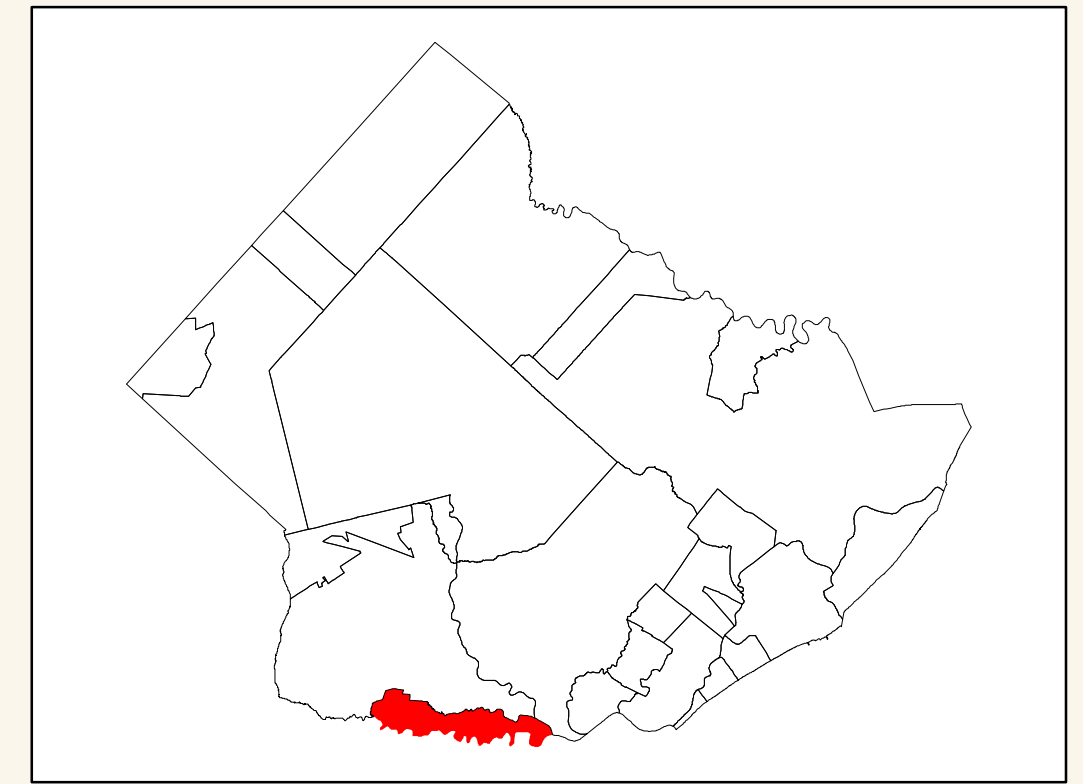
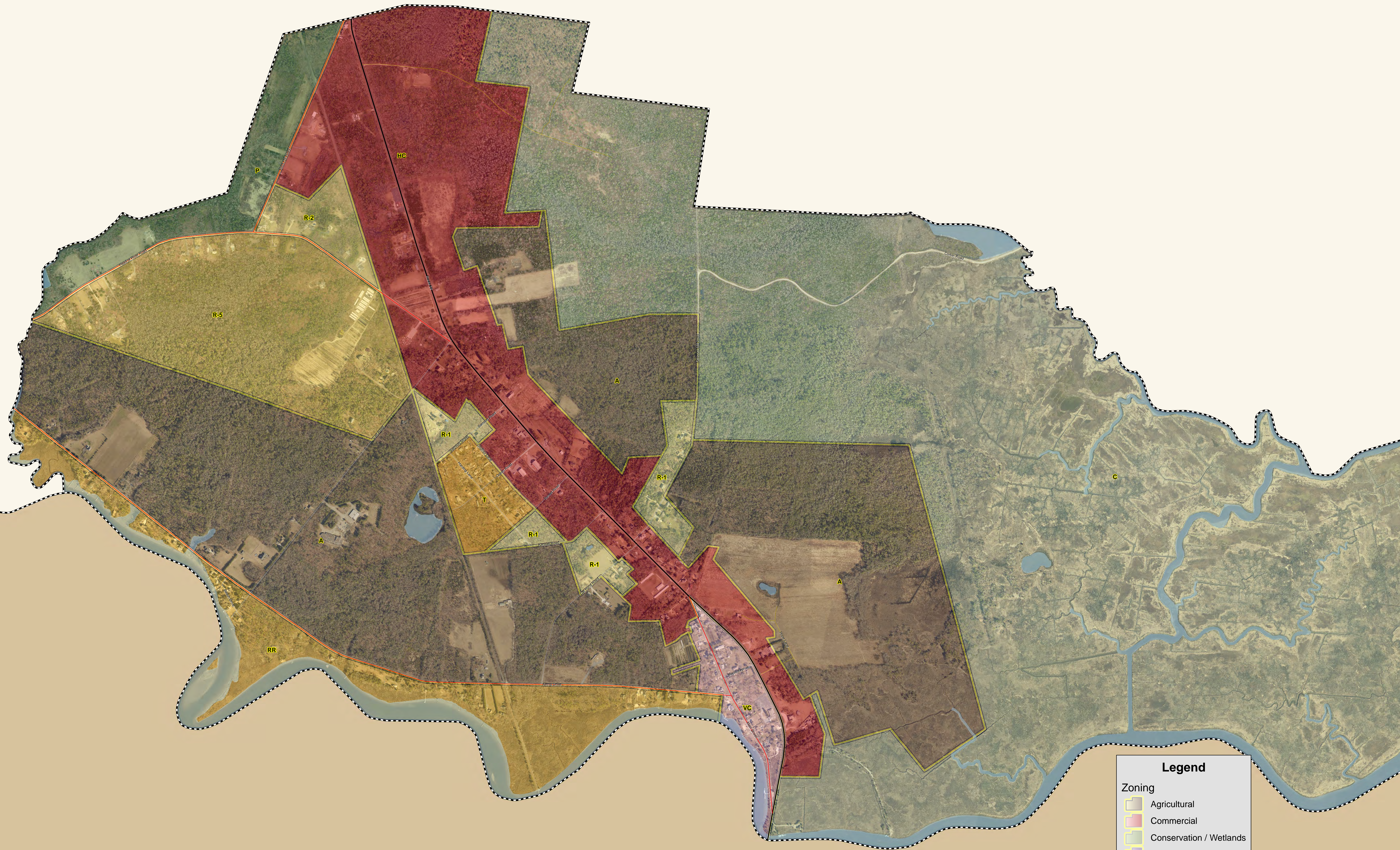


*Corbin City  
Municipal Zoning Boundaries  
December 2011  
Atlantic County, NJ*



ESTELL MANOR



CAPE MAY

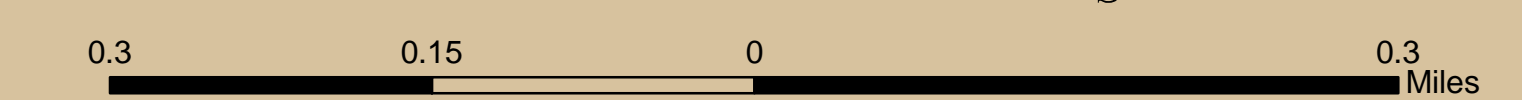
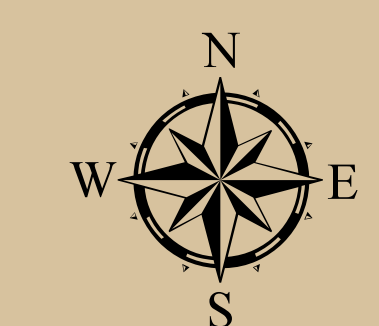
*Corbin City Zoning*

Zone	Description	Use	Base Lot	Min Lot	Min Density	Max Density	Revision Date	FAR	Total Acres
A	Agricultural	AGRICULTURAL	5 acres		0.20	0.20	12/20/2010	0.00	749.31
C	Conservation	CONSERVATION	10 acres		0.00	0.00	12/20/2010	0.00	4122.08
HC	Highway Commercial	COMMERCIAL	30,000 sf		0.00	0.00	12/20/2010	0.50	344.53
P	Pinehills Forest Area	PRESERVATION			0.00	0.00	12/20/2010	0.00	65.02
R-1	1 Acre Residential	RESIDENTIAL	1 acre		1.00	1.00	12/20/2010	0.00	43.66
R-2	2 Acre Residential	RESIDENTIAL	2 acres		0.50	0.50	12/20/2010	0.00	24.20
R-5	5 Acre Residential	RESIDENTIAL	5 acres		0.20	0.20	12/20/2010	0.00	174.77
RR	River Residential	RESIDENTIAL	2 acres		0.50	0.50	12/20/2010	0.00	158.10
T	Trailer/ Mobile Home Park	RESIDENTIAL	10,125 sf		4.30	4.30	12/20/2010	0.00	24.87
VC	Village Commercial	COMMERCIAL	11,250 sf		3.87	3.87	12/20/2010	0.50	35.02

**Legend**

**Zoning**

- Agricultural
- Commercial
- Conservation / Wetlands
- Industrial/ Institutional
- Residential
- Water
- US & State Highways
- County Routes
- Municipal Streets
- Other
- Alley
- County Boundary
- Municipal Boundary



NOTE: MUNICIPAL ZONING WITH 2013 AERIAL VIEW  
 This map is for demonstration purposes only and was not developed in accordance with National Map Accuracy Standards. Any use of this product with respect to accuracy and precision shall be the sole responsibility of the user. The map was developed, in part, using New Jersey Department of Environmental Protection Geographic Information System (GIS) digital data, in conjunction with the Atlantic County Office of Geographic Information Systems, but this secondary product has not been verified by NJDEP and is not state authorized. The geospatial accuracy and precision of the GIS data contained in this map has not been developed nor verified by a professional licensed land surveyor and shall not be used in matters requiring delineation and location of true ground horizontal and/or vertical controls. File: CCB-Zoning2011.mxd  
 11/15/2011