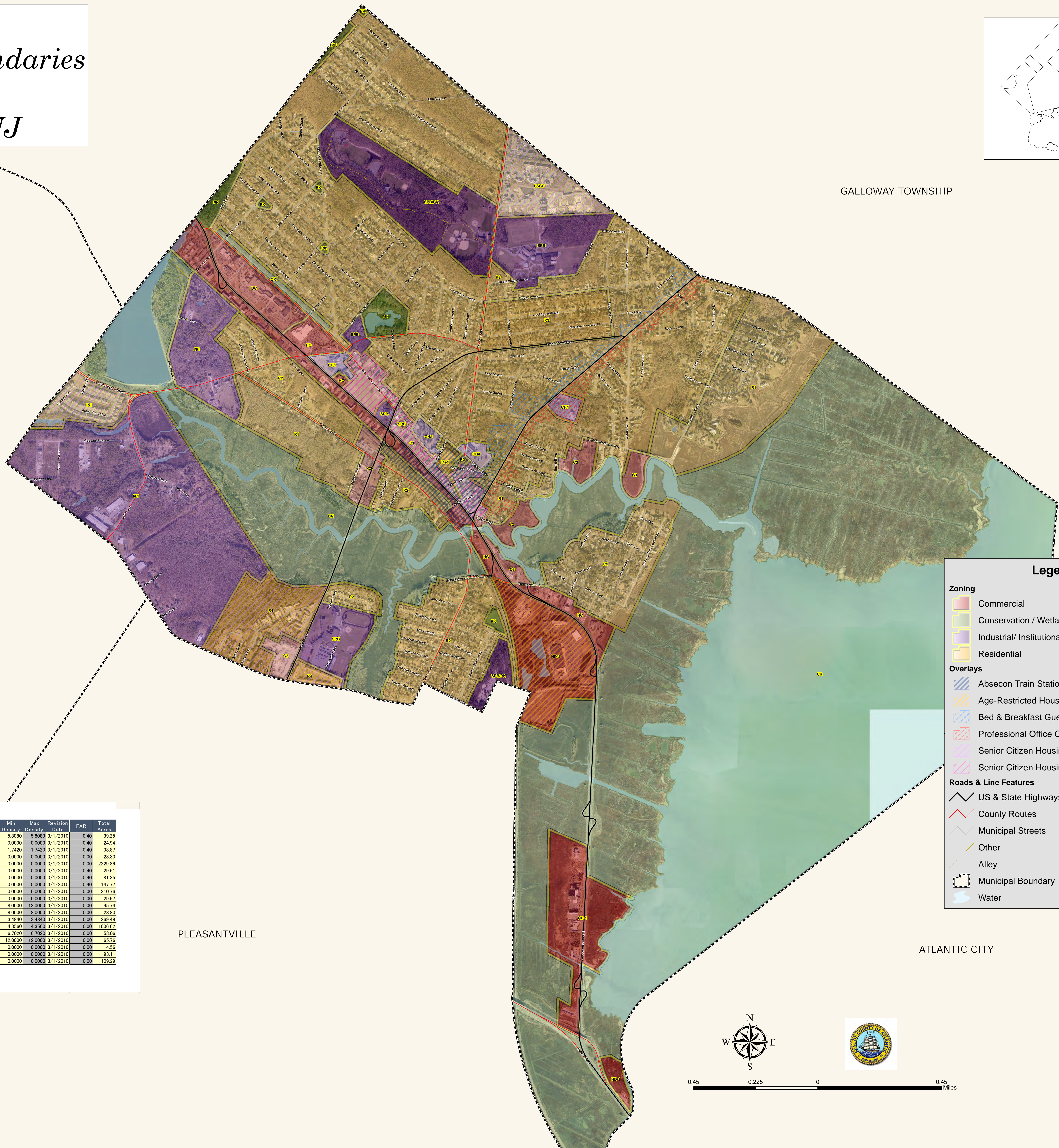
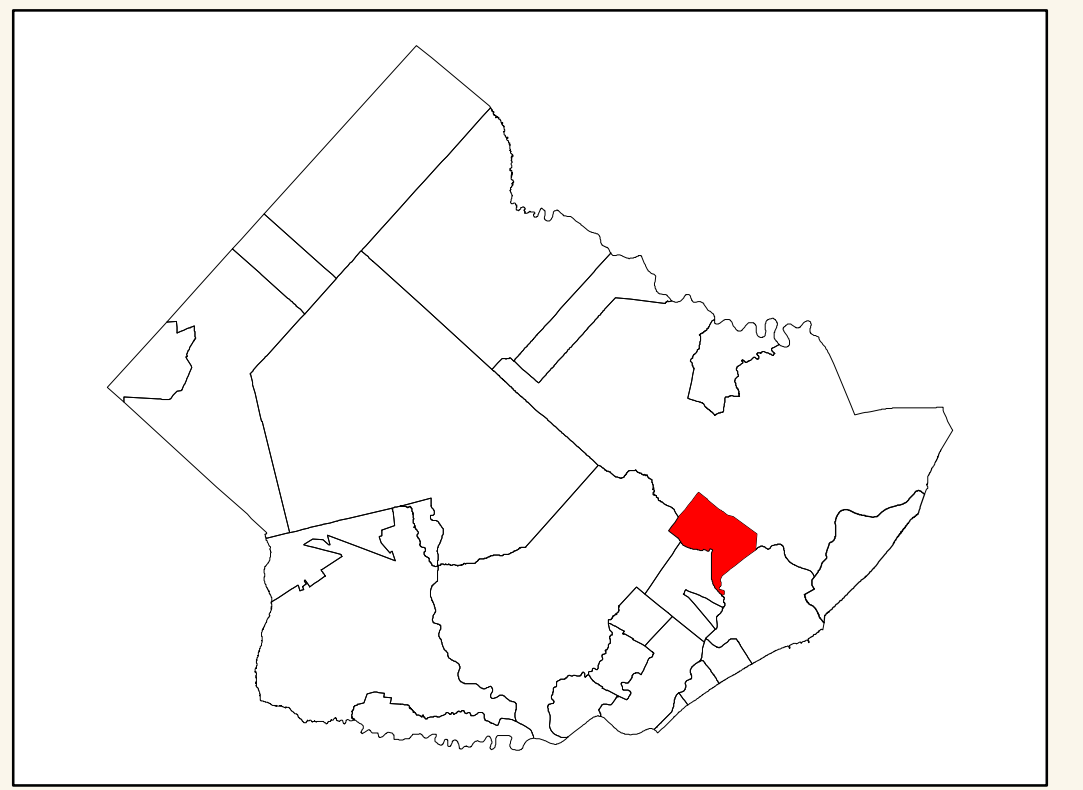


Absecon Municipal Zoning Boundaries December 2011 Atlantic County, NJ



EGG HARBOR TOWNSHIP

GALLOWAY TOWNSHIP

PLEASANTVILLE

ATLANTIC CITY

Legend

Zoning

- Commercial
- Conservation / Wetlands
- Industrial/ Institutional
- Residential

Overlays

- Absecon Train Station Area Overlay District
- Age-Restricted Housing Overlay District
- Bed & Breakfast Guest House Overlay District
- Professional Office Overlay District
- Senior Citizen Housing Community District A
- Senior Citizen Housing Community District B

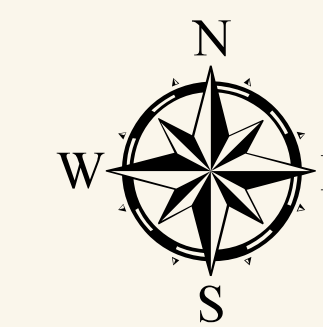
Roads & Line Features

- US & State Highways
- County Routes
- Municipal Streets
- Other
- Alley
- Municipal Boundary
- Water

Absecon Municipal Zoning Properties

Zone	Zone Description	Use	Base Lot Size	Min Lot Size	Min Density	Max Density	Revision Date	FAR	Total Acres
C1	Central Business District	COMMERCIAL	7,500 sf		5.8080	5.8080	3/1/2010	0.40	39.25
C2	Community Business District*	COMMERCIAL	15,000 sf	7,500 sf	0.0000	0.0000	3/1/2010	0.40	24.84
C3	Marine Commercial	COMMERCIAL	25,000 sf		1.7420	1.7420	3/1/2010	0.40	33.87
CH/I	Church & Institutional	INSTITUTIONAL	4 acres		0.0000	0.0000	3/1/2010	0.00	23.33
CR	Conservation-Recreation District	CONSERVATION			0.0000	0.0000	3/1/2010	0.00	2229.86
DC	Design Commercial	COMMERCIAL	6 acres		0.0000	0.0000	3/1/2010	0.40	29.61
HC	Highway Commercial**	COMMERCIAL	30,000 sf	15,000 sf	0.0000	0.0000	3/1/2010	0.40	81.35
HD-1	Highway Development	COMMERCIAL	2.5 acres		0.0000	0.0000	3/1/2010	0.40	147.77
I/P1	Industrial Planned Industrial Area	INDUSTRIAL	15 acres	1 acre	0.0000	0.0000	3/1/2010	0.00	310.76
PK	Park	PARK			0.0000	0.0000	3/1/2010	0.00	29.87
PSCC	Planned Senior Citizen	RESIDENTIAL	20 acres		8.0000	12.0000	3/1/2010	0.00	45.74
R-1	Residential Inclusionary	RESIDENTIAL	30 acres		8.0000	8.0000	3/1/2010	0.00	29.80
R1	Low Density Residential	RESIDENTIAL	12,500 sf		3.4840	3.4840	3/1/2010	0.00	269.49
R2	Moderate Density Residential	RESIDENTIAL	10,000 sf		4.3560	4.3560	3/1/2010	0.00	1006.62
R3	High Density Residential	RESIDENTIAL	6,500 sf		6.7020	6.7020	3/1/2010	0.00	53.06
RA1	Central Business District Redevelopment Area	RESIDENTIAL	3 acres		12.0000	12.0000	3/1/2010	0.00	65.76
RA1	Central Business District Redevelopment Area	COMMERCIAL			0.0000	0.0000	3/1/2010	0.00	4.56
SPB	School & Public Building	INSTITUTIONAL			0.0000	0.0000	3/1/2010	0.00	83.11
SPB/PK	Schools & Public Buildings / Parkland	INSTITUTIONAL / PARK			0.0000	0.0000	3/1/2010	0.00	109.29

* (min)restaurants, banks and convenience stores.
** (max) drive-in restaurants and motels



0.45 0.225 0 0.45 Miles

NOTE: MUNICIPAL ZONING WITH 2013 AERIAL VIEW
This map is for demonstration purposes only and was not developed in accordance with National Map Accuracy Standards. Any use of this product with respect to accuracy and precision shall be the sole responsibility of the user. The map was developed in part using New Jersey Department of Environmental Protection Geographic Information System (GIS) digital data in conjunction with the Atlantic County Office of Geographic Information Systems, but this secondary product has not been verified by NJDEP and is not state authorized. The geographic accuracy and precision of the GIS data contained in this map has not been developed nor verified by a professional licensed land surveyor and shall not be used as a standard to be used in matters requiring delineation and location of true ground horizontal and/or vertical controls. File: ABS-Zoning2011.mxd
11/15/2011