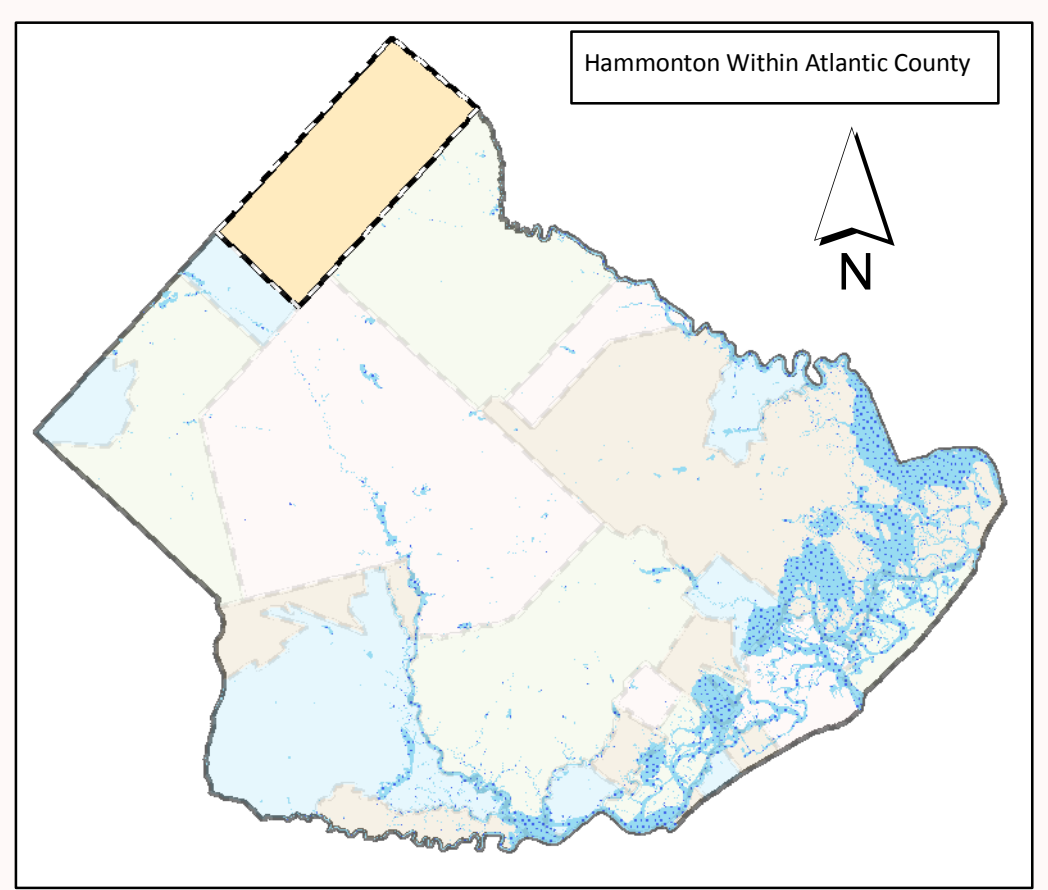
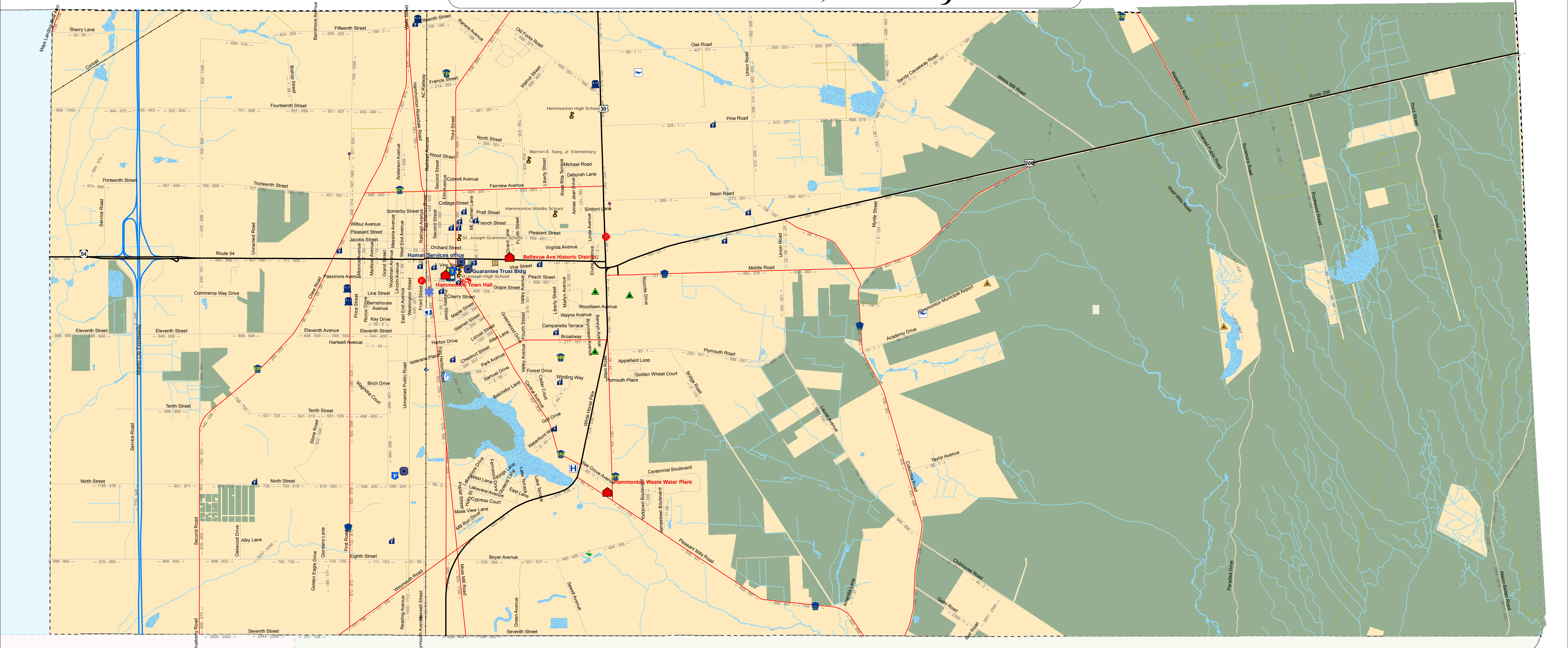




# HAMMONTON ATLANTIC COUNTY, NEW JERSEY



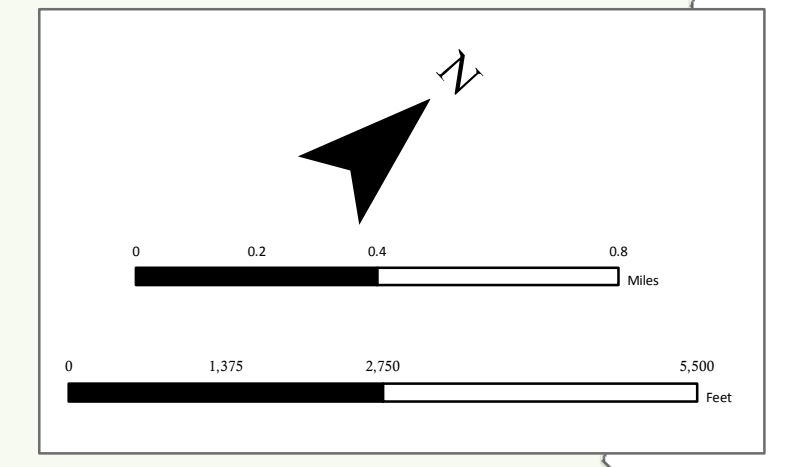
Road Lengths		
Road Type	Length in Feet	Length in Miles
Alley	1921.92	0.36
County	157932.03	29.91
Municipal	508103.27	96.23
Other	100562.32	19.05
Airport	6674.04	1.26
Railroad	27673.92	5.24
State	83221.26	15.76
Atlantic City Expressway	55851.28	10.58

Open Space Area		
Open Space Type	Area in Square Feet	Area in Acres
County Farmland Preservation	5665298.3157	1305.44762
Municipal Open Space	9311293.6323	213.757889
NJDEP Fish and Wildlife	147159.2411	3.378311
NJDEP Parks and Forestry	399910384.4775	9180.679166
State Farmland PDC Transfer	29168163.5791	669.608898
State Farmland Preservation	2719164.6746	62.423431

Area Square Miles	Area and Population		
	1990	2000	Estimated 2006
41.425417	12221	12604	13572

**Legend**

- AC Expressway
- State Highways
- County Routes
- Municipal Streets
- Other
- Alley
- Railroad
- Address Ranges
- Municipal Boundary
- Hammonton Boundary
- Streams
- Water
- Preserved Land
- Municipal Public Works MUA
- Municipal Buildings
- County Public Works
- County Properties
- Police
- Fire Stations
- Rescue Squad
- Hospitals
- Schools
- Post Office
- Airports
- Train Stations
- Cultural Arts Center
- Golf Course
- Library
- Museum
- Shopping Center
- Winery
- Historic Points
- Campgrounds
- Places of Worship
- Cemeteries



This map is for demonstration purposes only and was not developed in accordance with National Map Accuracy Standards. Any use of this product with respect to accuracy and precision shall be the sole responsibility of the user. The map was developed, in part, using New Jersey Department of Environmental Protection Geographic Information System (GIS) digital data. In accordance with the Atlantic County Office of Geographic Information Systems, but this secondary product has not been verified by NJDEP and is not state authorized. The geographic accuracy and precision of the GIS data contained in this map has not been developed or verified by a professional licensed land surveyor and shall not be used in matters requiring delineation and location of true ground horizontal and/or vertical controls. File: Hammonton