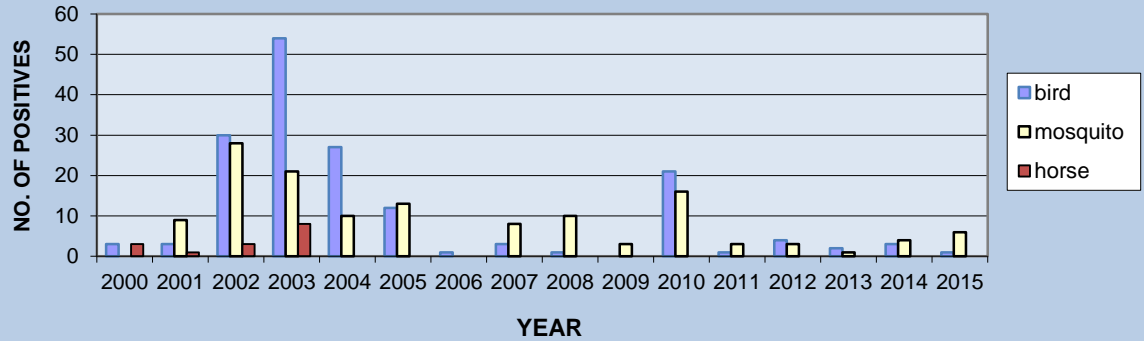
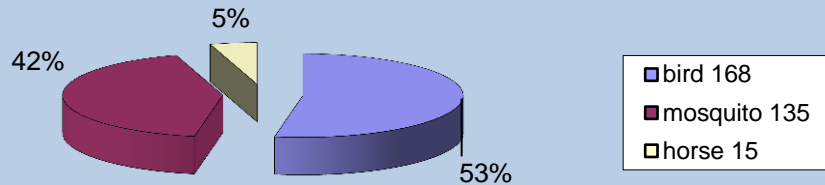


# WEST NILE VIRUS

## WNV POSITIVE SPECIMENS BY YEAR 2000 - 2015



## TOTALS BY SPECIMEN 2000-2015



## TOTALS BY MUNICIPALITY 2015

Muni	Bird	Mosquito	Horse
Absecon			
Brig			
Buena			
BVT			
Corbin Cty			
EHC			
EHT			
Estell			
Folsom			
Galloway	1		
Hamilton			
Hammon		1	
Linwood		1	
Longport			
Margate			
Mullica			
N'field		2	
P'ville			
Port Rep			
Somers Pt		1	
Ventnor		1	
Weymouth			